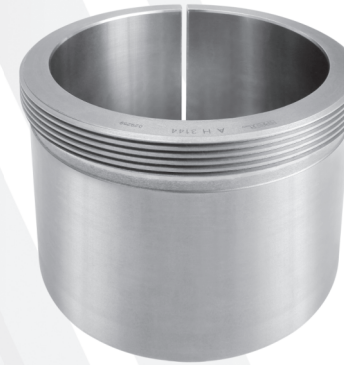


WITHDRAWAL SLEEVES

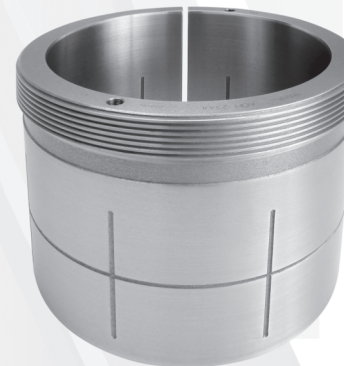
WITHDRAWAL SLEEVES AH, AHX, AH ...G, AHX ...G



Despite the name “Withdrawal”, Withdrawal sleeves are used to mount bearings with tapered bores onto a cylindrical seat of stepped shaft. While mounting, the sleeves are pushed into the bearing inner ring. The sleeve is located on the shaft by a nut or an end plate on the edge of the shaft. The thread of the withdrawal sleeve serves to withdraw the set, hence its name, withdrawal sleeve. Its accessories: lock nut, lock washer and removal nut. They all should be ordered separately.

Material: BGL Nodular (Ductile) with characteristics exceeding the DIN 1563 Standard class GJS 500-7 (formerly GGG50). Optionally in carbon steel.

HYDRAULIC WITHDRAWAL SLEEVES AOH, AOHX, AOH ...G, AOHX ...G



With the same measurements of the usual sleeves, these are recommended for medium large-sized applications, since they are provided with internal and external grooves and duct for oil injection, making the mounting and specially dismounting process much easier and quicker. Available for shafts from 150 mm.

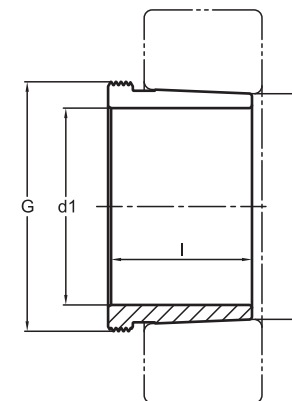
Material: BGL Nodular (Ductile) with characteristics exceeding the DIN 1563 Standard class GJS 500-7 (formerly GGG50). Optionally in carbon steel.

Note: The suffix G is the new standard for withdrawal sleeve threads from different series.



WITHDRAWAL SLEEVES

AH, AHX

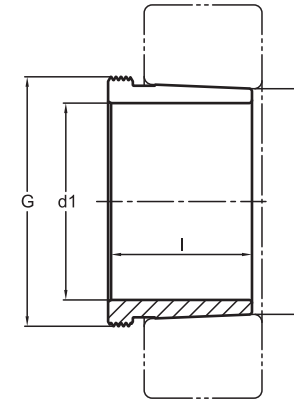


WITHDRAWAL SLEEVES AH, AHX

Part Number	Hydraulic Part Number	d1 (mm)	d (mm)	l (mm)	G*	Weight (Kg)	HYDRAULIC		NUT + MOUNTING LOCK		ASSEMBLY TOOL		Extension Tube	DISASSEMBLY TOOL			Hydraulic Pump		Bearings		
							A	G1	Assembly Nut	Lockwasher / Locking Devices	Hook Spanner	Assembly Hydraulic Nut		Withdrawal Nut	Withdrawal Hook Spanner	Withdrawal Hydraulic Nut					
AH 208		35	40	25	M 45X1,5	0,08			KM 7	MB 7	HN 7		KM 9	HN 9			1208K	20208K			
AH 308		35	40	29	M 45X1,5	0,08			KM 7	MB 7	HN 7		KM 9	HN 9			1308K	2208K	22208K	21308K	
AH 2308		35	40	40	M 45X1,5	0,12			KM 7	MB 7	HN 7		KM 9	HN 9			2308K	22308K			
AH 209		40	45	26	M 50X1,5	0,08			KM 8	MB 8	HN 8		KM 10	HN 10	HMV 10E	BH 100-0.7 / BH 160 / BH 160-4.8	1209K	20209K			
AH 309		40	45	31	M 50X1,5	0,10			KM 8	MB 8	HN 8		KM 10	HN 10	HMV 10E	BH 100-0.7 / BH 160 / BH 160-4.8	1309K	2209K	21309K	22209K	C2209K
AH 2309		40	45	44	M 50X1,5	0,15			KM 8	MB 8	HN 8		KM 10	HN 10	HMV 10E	BH 100-0.7 / BH 160 / BH 160-4.8	2309K	22309K			
AH 210		45	50	28	M 55X2	0,09			KM 9	MB 9	HN 9		KM 11	HN 11	HMV 11E	BH 100-0.7 / BH 160 / BH 160-4.8	1210K	20210K			
AHX 310		45	50	35	M 55X2	0,12			KM 9	MB 9	HN 9		KM 11	HN 11	HMV 11E	BH 100-0.7 / BH 160 / BH 160-4.8	1310K	2210K	21310K	22210K	C2210K
AHX 2310		45	50	50	M 55X2	0,18			KM 9	MB 9	HN 9		KM 11	HN 11	HMV 11E	BH 100-0.7 / BH 160 / BH 160-4.8	2310K	22310K			
AH 211		50	55	29	M 60X2	0,11			KM 10	MB 10	HN 10	HMV 10E	KM 12	HN 12	HMV 12E	BH 100-0.7 / BH 160 / BH 160-4.8	1211K	20211K			
AHX 311		50	55	37	M 60X2	0,15			KM 10	MB 10	HN 10	HMV 10E	KM 12	HN 12	HMV 12E	BH 100-0.7 / BH 160 / BH 160-4.8	1311K	2211K	21311K	22211K	C2211K
AHX 2311		50	55	54	M 60X2	0,22			KM 10	MB 10	HN 10	HMV 10E	KM 12	HN 12	HMV 12E	BH 100-0.7 / BH 160 / BH 160-4.8	2311K	22311K			
AH 212		55	60	32	M 65X2	0,16			KM 11	MB 11	HN 11	HMV 11E	KM 13	HN 13	HMV 13E	BH 100-0.7 / BH 160 / BH 160-4.8	1212K	20212K			
AHX 312		55	60	40	M 65X2	0,17			KM 11	MB 11	HN 11	HMV 11E	KM 13	HN 13	HMV 13E	BH 100-0.7 / BH 160 / BH 160-4.8	1312K	2212K	21312K	22212K	C2212K
AHX 2312		55	60	58	M 65X2	0,26			KM 11	MB 11	HN 11	HMV 11E	KM 13	HN 13	HMV 13E	BH 100-0.7 / BH 160 / BH 160-4.8	2312K	22312K			
AH 213		60	65	32,5	M 75X2	0,18			KM 12	MB 12	HN 12	HMV 12E	KM 15	HN 15	HMV 15E	BH 100-0.7 / BH 160 / BH 160-4.8	1213K	20213K			
AH 213 G		60	65	32,5	M 70X2	0,18			KM 12	MB 12	HN 12	HMV 12E	KM 14	HN 14	HMV 14E	BH 100-0.7 / BH 160 / BH 160-4.8	1213K	20213K			
AH 313		60	65	42	M 75X2	0,22			KM 12	MB 12	HN 12	HMV 12E	KM 15	HN 15	HMV 15E	BH 100-0.7 / BH 160 / BH 160-4.8	1313K	2213K	21313K	22213K	
AH 313 G		60	65	42	M 70X2	0,35			KM 12	MB 12	HN 12	HMV 12E	KM 14	HN 14	HMV 14E	BH 100-0.7 / BH 160 / BH 160-4.8	1313K	2213K	21313K	22213K	C2213K
AH 2313		60	65	61	M 75X2	0,35			KM 12	MB 12	HN 12	HMV 12E	KM 15	HN 15	HMV 15E	BH 100-0.7 / BH 160 / BH 160-4.8	2313K	22313K			
AH 2313 G		60	65	61	M 70X2	0,69			KM 12	MB 12	HN 12	HMV 12E	KM 14	HN 14	HMV 14E	BH 100-0.7 / BH 160 / BH 160-4.8	2313K	22313K			
AH 214		65	70	33,5	M 80X2	0,21			KM 13	MB 13	HN 13	HMV 13E	KM 16	HN 16	HMV 16E	BH 100-0.7 / BH 160 / BH 160-4.8	1214K	20214K			
AH 214 G		65	70	33,5	M 75X2	0,20			KM 13	MB 13	HN 13	HMV 13E	KM 15	HN 15	HMV 15E	BH 100-0.7 / BH 160 / BH 160-4.8	1214K	20214K			
AH 314		65	70	43	M 80X2	0,24			KM 13	MB 13	HN 13	HMV 13E	KM 16	HN 16	HMV 16E	BH 100-0.7 / BH 160 / BH 160-4.8	1314K	2214K	21314K	22214	
AH 314 G		65	70	43	M 75X2	0,24			KM 13	MB 13	HN 13	HMV 13E	KM 15	HN 15	HMV 15E	BH 100-0.7 / BH 160 / BH 160-4.8	1314K	2214K	21314K	K22214K	C2214K
AHX 2314		65	70	64	M 80X2	0,41			KM 13	MB 13	HN 13	HMV 13E	KM 16	HN 16	HMV 16E	BH 100-0.7 / BH 160 / BH 160-4.8	2314K	22314K			
AHX 2314 G		65	70	64	M 75X2	0,42			KM 13	MB 13	HN 13	HMV 13E	KM 15	HN 15	HMV 15E	BH 100-0.7 / BH 160 / BH 160-4.8	2314K	22314K		C2314 K	
AH 215		70	75	34,5	M 85X2	0,26			KM 14	MB 14	HN 14	HMV 14E	KM 17	HN 17	HMV 17E	BH 100-0.7 / BH 160 / BH 160-4.8	1215K	20215K			
AH 215 G		70	75	34,5	M 80X2	0,22			KM 14	MB 14	HN 14	HMV 14E	KM 16	HN 16	HMV 16E	BH 100-0.7 / BH 160 / BH 160-4.8	1215K	20215K			
AH 315		70	75	45	M 85X2	0,28			KM 14	MB 14	HN 14	HMV 14E	KM 17	HN 17	HMV 17E	BH 100-0.7 / BH 160 / BH 160-4.8	1315K	2215K	21315K	22215K	
AH 315 G		70	75	45	M 80X2	0,25			KM 14	MB 14	HN 14	HMV 14E	KM 16	HN 16	HMV 16E	BH 100-0.7 / BH 160 / BH 160-4.8	1315K	2215K	21315K	22215K	C2215K
AHX 2315		70	75	68	M 85X2	0,47			KM 14	MB 14	HN 14	HMV 14E	KM 17	HN 17	HMV 17E	BH 100-0.7 / BH 160 / BH 160-4.8	2315K	22315K			
AHX 2315 G		70	75	68	M 80X2	0,47			KM 14	MB 14	HN 14	HMV 14E	KM 16	HN 16	HMV 16E	BH 100-0.7 / BH 160 / BH 160-4.8	2315K	22315K		C2315 K	



WITHDRAWAL SLEEVES AH, AHX

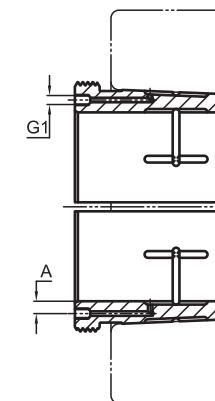
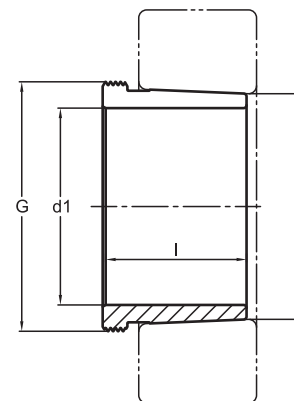


WITHDRAWAL SLEEVES AH, AHX

Part Number	Hydraulic Part Number	d1 (mm)	d (mm)	l (mm)	G*	Weight (Kg)	HYDRAULIC		NUT + MOUNTING LOCK		ASSEMBLY TOOL		Extension Tube	DISASSEMBLY TOOL			Bearings					
							A	G1	Assembly Nut	Lockwasher / Locking Devices	Hook Spanner	Assembly Hydraulic Nut		Withdrawal Nut	Withdrawal Hook Spanner	Withdrawal Hydraulic Nut	Hydraulic Pump					
AH 216		75	80	35.5	M 90X2	0.29			KM 15	MB 15	HN 15	HMV 15E		KM 18	HN 18	HMV 18E	BH 100-0.7 / BH 160 / BH 160-4.8	1216K	20216K			
AH 316		75	80	48	M 90X2	0.33			KM 15	MB 15	HN 15	HMV 15E		KM 18	HN 18	HMV 18E	BH 100-0.7 / BH 160 / BH 160-4.8	1316K	2216K	21316K	22216K	C2216K
AHX 2316		75	80	71	M 90X2	0.52			KM 15	MB 15	HN 15	HMV 15E		KM 18	HN 18	HMV 18E	BH 100-0.7 / BH 160 / BH 160-4.8	2316K	22316K			C2316 K
AH 217		80	85	38.5	M 95X2	0.29			KM 16	MB 16	HN 16	HMV 16E		KM 19	HN 19	HMV 19E	BH 100-0.7 / BH 160 / BH 160-4.8	1217K	20217K			
AHX 317		80	85	52	M 95X2	0.38			KM 16	MB 16	HN 16	HMV 16E		KM 19	HN 19	HMV 19E	BH 100-0.7 / BH 160 / BH 160-4.8	1317K	2217K	22217 EK	21317 EK	C2217 K
AHX 2317		80	85	74	M 95X2	0.59			KM 16	MB 16	HN 16	HMV 16E		KM 19	HN 19	HMV 19E	BH 100-0.7 / BH 160 / BH 160-4.8	2317K	22317K			C2317 K
AH 218		85	90	40	M 100X2	0.31			KM 17	MB 17	HN 17	HMV 17E		KM 20	HN 20	HMV 20E	BH 100-0.7 / BH 160 / BH 160-4.8	1218K	20218K			
AHX 318		85	90	53	M 100X2	0.41			KM 17	MB 17	HN 17	HMV 17E		KM 20	HN 20	HMV 20E	BH 100-0.7 / BH 160 / BH 160-4.8	1318K	2218K	21318K	22218 EK	C2218 K
AHX 3218		85	90	63	M 100X2	0.52			KM 17	MB 17	HN 17	HMV 17E		KM 20	HN 20	HMV 20E	BH 100-0.7 / BH 160 / BH 160-4.8	23218K				
AHX 2318		85	90	79	M 100X2	0.69			KM 17	MB 17	HN 17	HMV 17E		KM 20	HN 20	HMV 20E	BH 100-0.7 / BH 160 / BH 160-4.8	2318K	22318K			C2318 K
AH 219		90	95	43	M 105X2	0.40			KM 18	MB 18	HN 18	HMV 18E		KM 21	HN 21	HMV 21E	BH 100-0.7 / BH 160 / BH 160-4.8	1219K	20219K			
AHX 319		90	95	57	M 105X2	0.47			KM 18	MB 18	HN 18	HMV 18E		KM 21	HN 21	HMV 21E	BH 100-0.7 / BH 160 / BH 160-4.8	1319K	2219K	21319K	22219K	C2219K
AHX 3219		90	95	67	M 105X2	0.63			KM 18	MB 18	HN 18	HMV 18E		KM 21	HN 21	HMV 21E	BH 100-0.7 / BH 160 / BH 160-4.8	23219K				
AHX 2319		90	95	85	M 105X2	0.81			KM 18	MB 18	HN 18	HMV 18E		KM 21	HN 21	HMV 21E	BH 100-0.7 / BH 160 / BH 160-4.8	2319K	22319K			C2319 K
AH 220		95	100	45	M 110X2	0.48			KM 19	MB 19	HN 19	HMV 19E		KM 22	HN 22	HMV 22E	BH 100-0.7 / BH 160 / BH 160-4.8	1220K	20220K			
AHX 320		95	100	59	M 110X2	0.52			KM 19	MB 19	HN 19	HMV 19E		KM 22	HN 22	HMV 22E	BH 100-0.7 / BH 160 / BH 160-4.8	1320K	2220K	21320K	22220K	C2220K
AHX 3120		95	100	64	M 110X2	1.27			KM 19	MB 19	HN 19	HMV 19E		KM 22	HN 22	HMV 22E	BH 100-0.7 / BH 160 / BH 160-4.8	23120K				C3120K
AHX 3220		95	100	73	M 110X2	0.69			KM 19	MB 19	HN 19	HMV 19E		KM 22	HN 22	HMV 22E	BH 100-0.7 / BH 160 / BH 160-4.8	23220K				
AHX 2320		95	100	90	M 110X2	0.91			KM 19	MB 19	HN 19	HMV 19E		KM 22	HN 22	HMV 22E	BH 100-0.7 / BH 160 / BH 160-4.8	2320K	22320K			C2320 K
AH 222		105	110	50	M 120X2	0.55			KM 21	MB 21	HN 21	HMV 21E		KM 24	HN 24	HMV 24E	BH 100-0.7 / BH 160 / BH 160-4.8	1222K	20222K			
AHX 322		105	110	63	M 120X2	0.64			KM 21	MB 21	HN 21	HMV 21E		KM 24	HN 24	HMV 24E	BH 100-0.7 / BH 160 / BH 160-4.8	21322K	23022K			
AHX 3122		105	110	68	M 120X2	0.68			KM 21	MB 21	HN 21	HMV 21E		KM 24	HN 24	HMV 24E	BH 100-0.7 / BH 160 / BH 160-4.8	22222K	23122K	C3022K		C2222K
AH 24122		105	110	82	M 115X2	0.65			KM 21	MB 21	HN 21	HMV 21E		KM 23	HN 23	HMV 23E	BH 100-0.7 / BH 160 / BH 160-4.8	24122K30				C4122K30V
AHX 3222		105	110	82	M 125X2	0.94			KM 21	MB 21	HN 21	HMV 21E		KM 25	HN 25	HMV 25E	BH 100-0.7 / BH 160 / BH 160-4.8	23222K				
AHX 3222 G		105	110	82	M 120X2	0.94			KM 21	MB 21	HN 21	HMV 21E		KM 24	HN 24	HMV 24E	BH 100-0.7 / BH 160 / BH 160-4.8	23222K2				
AHX 2322		105	110	98	M 125X2	1.22			KM 21	MB 21	HN 21	HMV 21E		KM 25	HN 25	HMV 25E	BH 100-0.7 / BH 160 / BH 160-4.8	2322K				
AHX 2322 G		105	110	98	M 120X2	1.22			KM 21	MB 21	HN 21	HMV 21E		KM 24	HN 24	HMV 24E	BH 100-0.7 / BH 160 / BH 160-4.8	22322K				
AHX 3024		115	120	60	M 130X2	0.77			KM 23	MB 23	HN 23	HMV 23E		KM 26	HN 26	HMV 26E	BH 100-0.7 / BH 160 / BH 160-4.8	23024K				C3024K
AHX 324		115	120	69	M 130X2	0.89			KM 23	MB 23	HN 23	HMV 23E		KM 26	HN 26	HMV 26E	BH 100-0.7 / BH 160 / BH 160-4.8					
AH 24024		115	120	73	M 125X2	0.62			KM 23	MB 23	HN 23	HMV 23E		KM 25	HN 25	HMV 26E	BH 100-0.7 / BH 160 / BH 160-4.8	24024K30				C4024K
AHX 3124		115	120	75	M 130X2	0.85			KM 23	MB 23	HN 23	HMV 23E		KM 26	HN 26	HMV 26E	BH 100-0.7 / BH 160 / BH 160-4.8	22224K				3023124K C2224K
AHX 3224		115	120	90	M 135X2	1.16			KM 23	MB 23	HN 23	HMV 23E		KM 27	HN 27	HMV 27E	BH 100-0.7 / BH 160 / BH 160-4.8	23224K				
AHX 3224 G		115	120	90	M 130X2	1.20			KM 23	MB 23	HN 23	HMV 23E		KM 26	HN 26	HMV 26E	BH 100-0.7 / BH 160 / BH 160-4.8	23224K				C3224K
AH 24124		115	120	93	M 130X2	0.91			KM 23	MB 23	HN 23	HMV 23E		KM 26	HN 26	HMV 26E	BH 100-0.7 / BH 160 / BH 160-4.8	24124K30				C4124K30V



WITHDRAWAL SLEEVES
AH, AHX, AOH, AOHX



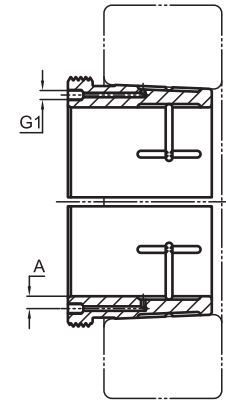
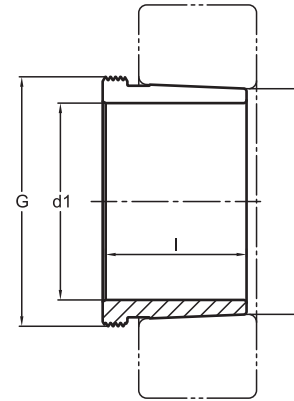
WITHDRAWAL SLEEVES AH, AHX

HYDRAULIC WITHDRAWAL SLEEVES
AOH, AOHX

Part Number	Hydraulic Part Number	d1 (mm)	d (mm)	l (mm)	G*	Weight (Kg)	HYDRAULIC		NUT + MOUNTING LOCK		ASSEMBLY TOOL		Extension Tube	DISASSEMBLY TOOL			Hydraulic Pump	Bearings	
							A	G1	Assembly Nut	Lockwasher / Locking Devices	Hook Spanner	Assembly Hydraulic Nut		Withdrawal Nut	Withdrawal Hook Spanner	Withdrawal Hydraulic Nut			
AHX 2324		115	120	105	M 135X2	1.43			KM 23	MB 23	HN 23	HMV 23E		KM 27	HN 27	HMV 27E	BH 100-0.7 / BH 160 / BH 160-4.8	22324K	
AHX 2324 G		115	120	105	M 130X2	1.43			KM 23	MB 23	HN 23	HMV 23E		KM 26	HN 26	HMV 26E	BH 100-0.7 / BH 160 / BH 160-4.8	22324K	
AH 226		125	130	53	M 140X2	0.72			KM 25	MB 25	HN 25	HMV 25E		KM 28	HN 28	HMV 28E	BH 100-0.7 / BH 160 / BH 160-4.8		
AHX 3026		125	130	67	M 140X2	0.94			KM 25	MB 25	HN 25	HMV 25E		KM 28	HN 28	HMV 28E	BH 100-0.7 / BH 160 / BH 160-4.8	23026K	C3026K
AHX 326		125	130	74	M 140X2	1.05			KM 25	MB 25	HN 25	HMV 25E		KM 28	HN 28	HMV 28E	BH 100-0.7 / BH 160 / BH 160-4.8		
AHX 3126		125	130	78	M 140X2	0.97			KM 25	MB 25	HN 25	HMV 25E		KM 28	HN 28	HMV 28E	BH 100-0.7 / BH 160 / BH 160-4.8	22226K	23126K C2226K
AH 24026		125	130	83	M 135X2	0.77			KM 25	MB 25	HN 25	HMV 25E		KM 27	HN 27	HMV 27E	BH 100-0.7 / BH 160 / BH 160-4.8	24026K30	C4026K30
AH 24126		125	130	94	M 140X2	1.01			KM 25	MB 25	HN 25	HMV 25E		KM 28	HN 28	HMV 28E	BH 100-0.7 / BH 160 / BH 160-4.8	24126K30	C4126K30V
AHX 3226		125	130	98	M 145X2	1.42			KM 25	MB 25	HN 25	HMV 25E		KM 29	HN 29	HMV 29E	BH 100-0.7 / BH 160 / BH 160-4.8	23226K	
AHX 3226 G		125	130	98	M 140X2	1.42			KM 25	MB 25	HN 25	HMV 25E		KM 28	HN 28	HMV 28E	BH 100-0.7 / BH 160 / BH 160-4.8	23226K	
AHX 2326		125	130	115	M 145X2	1.78			KM 25	MB 25	HN 25	HMV 25E		KM 29	HN 29	HMV 29E	BH 100-0.7 / BH 160 / BH 160-4.8	22326K	
AHX 2326 G		125	130	115	M 140X2	1.20			KM 25	MB 25	HN 25	HMV 25E		KM 28	HN 28	HMV 28E	BH 100-0.7 / BH 160 / BH 160-4.8	22326K	C2326K
AH 228		135	140	56	M 150X2	0.83			KM 27	MB 27	HN 27	HMV 27E		KM 30	HN 30	HMV 30E	BH 100-0.7 / BH 160 / BH 160-4.8		
AHX 3028		135	140	68	M 150X2	0.90			KM 27	MB 27	HN 27	HMV 27E		KM 30	HN 30	HMV 30E	BH 100-0.7 / BH 160 / BH 160-4.8	23028K	C3028K
AHX 328		135	140	77	M 150X2	1.18			KM 27	MB 27	HN 27	HMV 27E		KM 30	HN 30	HMV 30E	BH 100-0.7 / BH 160 / BH 160-4.8		
AH 24028		135	140	83	M 145X2	0.84			KM 27	MB 27	HN 27	HMV 27E		KM 29	HN 29	HMV 29E	BH 100-0.7 / BH 160 / BH 160-4.8	24028K30	C4028K30
AHX 3128		135	140	83	M 150X2	1.13			KM 27	MB 27	HN 27	HMV 27E		KM 30	HN 30	HMV 30E	BH 100-0.7 / BH 160 / BH 160-4.8	22228K	23128K C2228K
AH 24128		135	140	99	M 150X2	1.20			KM 27	MB 27	HN 27	HMV 27E		KM 30	HN 30	HMV 30E	BH 100-0.7 / BH 160 / BH 160-4.8	24128K30	C4128K30V
AHX 3228		135	140	104	M 155X3	1.63			KM 27	MB 27	HN 27	HMV 27E		KM 31	HN 31	HMV 31E	BH 100-0.7 / BH 160 / BH 160-4.8	23228K	
AHX 3228 G		135	140	104	M 150X2	1.63			KM 27	MB 27	HN 27	HMV 27E		KM 30	HN 30	HMV 30E	BH 100-0.7 / BH 160 / BH 160-4.8	23228K	
AHX 2328		135	140	125	M 155X3	2.08			KM 27	MB 27	HN 27	HMV 27E		KM 31	HN 31	HMV 31E	BH 100-0.7 / BH 160 / BH 160-4.8	22328K	
AHX 2328 G		135	140	125	M 150X2	1.97			KM 27	MB 27	HN 27	HMV 27E		KM 30	HN 30	HMV 30E	BH 100-0.7 / BH 160 / BH 160-4.8	22328K	
AH 230		145	150	60	M 160X3	0.97			KM 29	MB 29	HN 29	HMV 29E		KM 32	HN 32-HN 33	HMV 32E	BH 100-0.7 / BH 160 / BH 160-4.8		
AHX 3030		145	150	72	M 160X3	1.02			KM 29	MB 29	HN 29	HMV 29E		KM 32	HN 32-HN 33	HMV 32E	BH 100-0.7 / BH 160 / BH 160-4.8	23030K	C3030K
AHX 330 G		145	150	83	M 160X3	1.39			KM 29	MB 29	HN 29	HMV 29E		KM 32	HN 32-HN 33	HMV 32E	BH 100-0.7 / BH 160 / BH 160-4.8		
AH 24030		145	150	90	M 155X3	0.95			KM 29	MB 29	HN 29	HMV 29E		KM 31	HN 31	HMV 31E	BH 100-0.7 / BH 160 / BH 160-4.8	24030K30	C4030K30
AHX 3130		145	150	96	M 165X3	1.60			KM 29	MB 29	HN 29	HMV 29E		KM 33	HN 32-HN 33	HMV 33E	BH 100-0.7 / BH 160 / BH 160-4.8	22230K	23130K
AHX 3130 G		145	150	96	M 160X3	1.40			KM 29	MB 29	HN 29	HMV 29E		KM 32	HN 32-HN 33	HMV 32E	BH 100-0.7 / BH 160 / BH 160-4.8	22230K	23130K C2230K C3130K
AHX 3230		145	150	114	M 165X3	2.00			KM 29	MB 29	HN 29	HMV 29E		KM 33	HN 32-HN 33	HMV 30E	BH 100-0.7 / BH 160 / BH 160-4.8	23230K	
AHX 3230 G		145	150	114	M 160X3	2.00			KM 29	MB 29	HN 29	HMV 29E		KM 32	HN 32-HN 33	HMV 32E	BH 100-0.7 / BH 160 / BH 160-4.8	23230K	
AH 24130		145	150	115	M 160X3	1.47			KM 29	MB 29	HN 29	HMV 29E		KM 32	HN 32-HN 33	HMV 32E	BH 100-0.7 / BH 160 / BH 160-4.8	24130K30	C4130K30V
AHX 2330		145	150	135	M 165X3	2.50			KM 29	MB 29	HN 29	HMV 29E		KM 33	HN 32-HN 33	HMV 33E	BH 100-0.7 / BH 160 / BH 160-4.8	22330K	
AHX 2330 G		145	150	135	M 160X3	2.28			KM 29	MB 29	HN 29	HMV 29E		KM 32	HN 32-HN 33	HMV 32E	BH 100-0.7 / BH 160 / BH 160-4.8	22330K	
AH 232		150	160	64	M 170X3	1.71			KM 30	MB 30	HN 30	HMV 30E		KM 34	HN 34	HMV 34E	BH 100-0.7 / BH 160 / BH 160-4.8		
AH 3032	AOH 3032	150	160	77	M 170X3	1.83	3.7	M6	KM 30	MB 30	HN 30	HMV 30E	TE M6 01 or 02	KM 34	HN 34	HMV 34E	BH 100-0.7 / BH 160 / BH 160-4.8	23032K	C3032K
AH 332 G	AOH 332 G	150	160	88	M 170X3	2.76	3.7	M6	KM 30	MB 30	HN 30	HMV 30E	TE M6 01 or 02	KM 34	HN 34	HMV 34E	BH 100-0.7 / BH 160 / BH 160-4.8		



WITHDRAWAL SLEEVES AH, AHX, AOH, AOHX



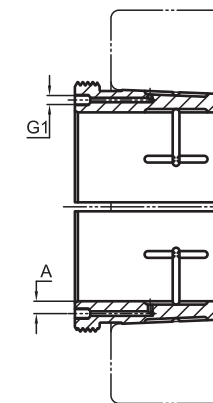
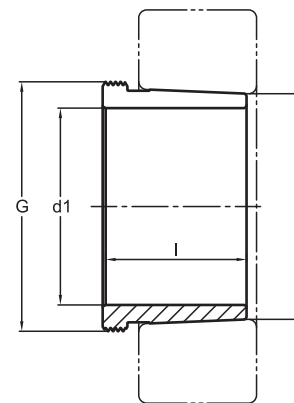
WITHDRAWAL SLEEVES AH, AHX

HYDRAULIC WITHDRAWAL SLEEVES
AOH, AOHX

Part Number	Hydraulic Part Number	d1 (mm)	d (mm)	l (mm)	G*	Weight (Kg)	HYDRAULIC			NUT + MOUNTING LOCK		ASSEMBLY TOOL		DISASSEMBLY TOOL			Hydraulic Pump	Bearings	
							A	G1	Assembly Nut	Lockwasher / Locking Devices	Hook Spanner	Assembly Hydraulic Nut	Extension Tube	Withdrawal Nut	Withdrawal Hook Spanner	Withdrawal Hydraulic Nut			
AH 24032	AOH 24032	150	160	95	M 170X3	2.08	3.7	M6	KM 30	MB 30	HN 30	HMV 30E	TE M6 01 or 02	KM 34	HN 34	HMV 34E	BH 100-0.7 / BH 160 / BH 160-4.8	24032K30	C4032K30
AH 3132	AOH 3132	150	160	103	M 180X3	2.89	4.8	M6	KM 30	MB 30	HN 30	HMV 30E	TE M6 01 or 02	KM 36	HN 36	HMV 36E	BH 100-0.7 / BH 160 / BH 160-4.8	22232K	23132K
AH 3132 G	AOH 3132 G	150	160	103	M 170X3	2.60	4	M6	KM 30	MB 30	HN 30	HMV 30E	TE M6 01 or 02	KM 34	HN 34	HMV 34E	BH 100-0.7 / BH 160 / BH 160-4.8	22232K	23132K
AH 24132	AOH 24132	150	160	124	M 170X3	2.67	4	M6	KM 30	MB 30	HN 30	HMV 30E	TE M6 01 or 02	KM 34	HN 34	HMV 34E	BH 100-0.7 / BH 160 / BH 160-4.8	24132K30	C4132K30V
AH 3232	AOH 3232	150	160	124	M 180X3	3.61	5	M6	KM 30	MB 30	HN 30	HMV 30E	TE M6 01 or 02	KM 36	HN 36	HMV 36E	BH 100-0.7 / BH 160 / BH 160-4.8	23232K	
AH 3232 G	AOH 3232 G	150	160	124	M 170X3	3.61	4	M6	KM 30	MB 30	HN 30	HMV 30E	TE M6 01 or 02	KM 34	HN 34	HMV 34E	BH 100-0.7 / BH 160 / BH 160-4.8	23232K	C3232K
AH 2332	AOH 2332	150	160	140	M 180X3	4.20	5.25	M6	KM 30	MB 30	HN 30	HMV 30E	TE M6 01 or 02	KM 36	HN 36	HMV 36E	BH 100-0.7 / BH 160 / BH 160-4.8	22332K	
AH 2332 G	AOH 2332 G	150	160	140	M 170X3	4.20	4	M6	KM 30	MB 30	HN 30	HMV 30E	TE M6 01 or 02	KM 34	HN 34	HMV 34E	BH 100-0.7 / BH 160 / BH 160-4.8	22332K	
AH 3934	AOH 3934	160	170	59	M 180X3	1.59	3.7	M6	KM 32	MB 32	HN 32-HN 33	HMV 32E	TE M6 01 or 02	KM 36	HN 36	HMV 36E	BH 100-0.7 / BH 160 / BH 160-4.8	23934K	
AH 234	AOH 234	160	170	69	M 180X3	1.98	3.7	M6	KM 32	MB 32	HN 32-HN 33	HMV 32E	TE M6 01 or 02	KM 36	HN 36	HMV 36E	BH 100-0.7 / BH 160 / BH 160-4.8		
AH 3034	AOH 3034	160	170	85	M 180X3	2.18	4	M6	KM 32	MB 32	HN 32-HN 33	HMV 32E	TE M6 01 or 02	KM 36	HN 36	HMV 36E	BH 100-0.7 / BH 160 / BH 160-4.8	23034K	C3034K
AH 334 G	AOH 334 G	160	170	93	M 180X3	2.75	4	M6	KM 32	MB 32	HN 32-HN 33	HMV 32E	TE M6 01 or 02	KM 36	HN 36	HMV 36E	BH 100-0.7 / BH 160 / BH 160-4.8		
AH 3134	AOH 3134	160	170	104	M 190X3	3.10	4.75	M6	KM 32	MB 32	HN 32-HN 33	HMV 32E	TE M6 01 or 02	KM 38	HN 38	HMV 38E	BH 100-0.7 / BH 160 / BH 160-4.8	22234K	23134K
AH 3134 G	AOH 3134 G	160	170	104	M 180X3	2.80	4	M6	KM 32	MB 32	HN 32-HN 33	HMV 32E	TE M6 01 or 02	KM 36	HN 36	HMV 36E	BH 100-0.7 / BH 160 / BH 160-4.8	22234K	23134K
AH 24034	AOH 24034	160	170	106	M 180X3	2.44	3.8	M6	KM 32	MB 32	HN 32-HN 33	HMV 32E	TE M6 01 or 02	KM 36	HN 36	HMV 36E	BH 100-0.7 / BH 160 / BH 160-4.8	24034K30	C4034K30
AH 24134	AOH 24134	160	170	125	M 180X3	2.95	4	M6	KM 32	MB 32	HN 32-HN 33	HMV 32E	TE M6 01 or 02	KM 36	HN 36	HMV 36E	BH 100-0.7 / BH 160 / BH 160-4.8	24134K30	C4134K30V
AH 3234	AOH 3234	160	170	134	M 190X3	4.23	5.25	M6	KM 32	MB 32	HN 32-HN 33	HMV 32E	TE M6 01 or 02	KM 38	HN 38	HMV 38E	BH 100-0.7 / BH 160 / BH 160-4.8	23234K	
AH 3234 G	AOH 3234 G	160	170	134	M 180X3	4.23	4	M6	KM 32	MB 32	HN 32-HN 33	HMV 32E	TE M6 01 or 02	KM 36	HN 36	HMV 36E	BH 100-0.7 / BH 160 / BH 160-4.8	23234K	
AH 2334	AOH 2334	160	170	146	M 190X3	4.73	5.5	M6	KM 32	MB 32	HN 32-HN 33	HMV 32E	TE M6 01 or 02	KM 38	HN 38	HMV 38E	BH 100-0.7 / BH 160 / BH 160-4.8	22334K	
AH 2334 G	AOH 2334 G	160	170	146	M 180X3	4.20	4	M6	KM 32	MB 32	HN 32-HN 33	HMV 32E	TE M6 01 or 02	KM 36	HN 36	HMV 36E	BH 100-0.7 / BH 160 / BH 160-4.8	22334K	
AH 3936	AOH 3936	170	180	66	M 190X3	1.91	3.7	M6	KM 34	MB 34	HN 34	HMV 34E	TE M6 01 or 02	KM 38	HN 38	HMV 38E	BH 100-0.7 / BH 160 / BH 160-4.8	23936K	
AH 236	AOH 236	170	180	69	M 190X3	2.10	3.7	M6	KM 34	MB 34	HN 34	HMV 34E	TE M6 01 or 02	KM 38	HN 38	HMV 38E	BH 100-0.7 / BH 160 / BH 160-4.8		
AH 3036	AOH 3036	170	180	92	M 190X3	2.53	4	M6	KM 34	MB 34	HN 34	HMV 34E	TE M6 01 or 02	KM 38	HN 38	HMV 38E	BH 100-0.7 / BH 160 / BH 160-4.8	23036K	C3036K
AH 2236	AOH 2236	170	180	105	M 200X3	3.31	4.75	M6	KM 34	MB 34	HN 34	HMV 34E	TE M6 01 or 02	KM 40	HN 40	HMV 40E	BH 100-0.7 / BH 160 / BH 160-4.8	22236K	
AH 2236 G	AOH 2236 G	170	180	105	M 190X3	3.31	4	M6	KM 34	MB 34	HN 34	HMV 34E	TE M6 01 or 02	KM 38	HN 38	HMV 38E	BH 100-0.7 / BH 160 / BH 160-4.8	22236K	
AH 24036	AOH 24036	170	180	116	M 190X3	2.87	3.75	M6	KM 34	MB 34	HN 34	HMV 34E	TE M6 01 or 02	KM 38	HN 38	HMV 38E	BH 100-0.7 / BH 160 / BH 160-4.8	24036K30	C4036K30
AH 3136	AOH 3136	170	180	116	M 200X3	3.78	5	M6	KM 34	MB 34	HN 34	HMV 34E	TE M6 01 or 02	KM 40	HN 40	HMV 40E	BH 100-0.7 / BH 160 / BH 160-4.8	23136K	
AH 3136 G	AOH 3136 G	170	180	116	M 190X3	3.78	4	M6	KM 34	MB 34	HN 34	HMV 34E	TE M6 01 or 02	KM 38	HN 38	HMV 38E	BH 100-0.7 / BH 160 / BH 160-4.8	23136K	C3136K
AH 24136	AOH 24136	170	180	134	M 190X3	3.37	4	M6	KM 34	MB 34	HN 34	HMV 34E	TE M6 01 or 02	KM 38	HN 38	HMV 38E	BH 100-0.7 / BH 160 / BH 160-4.8	24136K30	C4136K30V
AH 3236	AOH 3236	170	180	140	M 200X3	4.76	5.25	M6	KM 34	MB 34	HN 34	HMV 34E	TE M6 01 or 02	KM 40	HN 40	HMV 40E	BH 100-0.7 / BH 160 / BH 160-4.8	23236K	
AH 3236 G	AOH 3236 G	170	180	140	M 190X3	4.76	4	M6	KM 34	MB 34	HN 34	HMV 34E	TE M6 01 or 02	KM 38	HN 38	HMV 38E	BH 100-0.7 / BH 160 / BH 160-4.8	23236K	
AH 2336	AOH 2336	170	180	154	M 200X3	5.35	5.5	M6	KM 34	MB 34	HN 34	HMV 34E	TE M6 01 or 02	KM 40	HN 40	HMV 40E	BH 100-0.7 / BH 160 / BH 160-4.8	22336K	
AH 2336 G	AOH 2336 G	170	180	154	M 190X3	5.35	4	M6	KM 34	MB 34	HN 34	HMV 34E	TE M6 01 or 02	KM 38	HN 38	HMV 38E	BH 100-0.7 / BH 160 / BH 160-4.8	22336K	
AH 3938	AOH 3938	180	190	66	M 200X3	2.02	3.7	M6	KM 36	MB 36	HN 36	HMV 36E	TE M6 01 or 02	KM 40	HN 40	HMV 40E	BH 100-0.7 / BH 160 / BH 160-4.8	23938K	
AH 238 G	AOH 238 G	180	190	73	M 200X3	2.57	3.7	M6	KM 36	MB 36	HN 36	HMV 36E	TE M6 01 or 02	KM 40	HN 40	HMV 40E	BH 100-0.7 / BH 160 / BH 160-4.8		
AH 3038	AOH 3038	180	190	96	TR 205X4	3.02	4.3	M6	KM 36	MB 36	HN 36	HMV 36E	TE M6 01 or 02	HML 41T	HN 40	HMV 42E	BH 100-0.7 / BH 160 / BH 160-4.8	23038K	
AH 3038 G	AOH 3038 G	180	190	96	M 200X3	3.02	4	M6	KM 36	MB 36	HN 36	HMV 36E	TE M6 01 or 02	KM 40	HN 40	HMV 40E	BH 100-0.7 / BH 160 / BH 160-4.8	23038K	C3038K



WITHDRAWAL SLEEVES
AH, AHX, AOH, AOHX



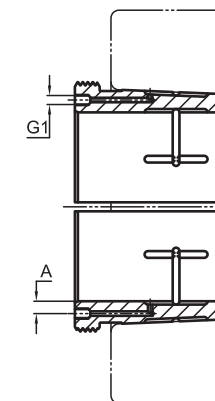
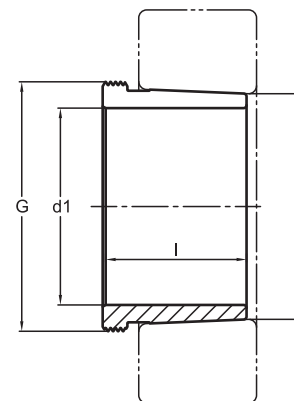
WITHDRAWAL SLEEVES AH, AHX

HYDRAULIC WITHDRAWAL SLEEVES
AOH, AOHX

Part Number	Hydraulic Part Number	d1 (mm)	d (mm)	l (mm)	G*	HYDRAULIC			NUT + MOUNTING LOCK		ASSEMBLY TOOL		DISASSEMBLY TOOL			Hydraulic Pump	Bearings	
						Weight (Kg)	A	G1	Assembly Nut	Lockwasher / Locking Devices	Hook Spanner	Assembly Hydraulic Nut	Extension Tube	Withdrawal Nut	Withdrawal Hook Spanner			Withdrawal Hydraulic Nut
AH 2238	AOH 2238	180	190	112	TR 210X4	3.79	4.75	M6	KM 36	MB 36	HN 36	HMV 36E	TE M6 01 or 02	HM 42T	HN 40	HMV 42E	BH 100-0.7 / BH 160 / BH 160-4.8	22238K
AH 2238 G	AOH 2238 G	180	190	112	M 200X3	3.40	4	M6	KM 36	MB 36	HN 36	HMV 36E	TE M6 01 or 02	KM 40	HN 40	HMV 40E	BH 100-0.7 / BH 160 / BH 160-4.8	22238K
AH 24038	AOH 24038	180	190	118	M 200X3	3.10	3.75	M6	KM 36	MB 36	HN 36	HMV 36E	TE M6 01 or 02	KM 40	HN 40	HMV 40E	BH 100-0.7 / BH 160 / BH 160-4.8	24038K30
AH 24038 G	AOH 24038 G	180	190	118	M 200X3	3.10	3.75	M6	KM 36	MB 36	HN 36	HMV 36E	TE M6 01 or 02	KM 40	HN 40	HMV 40E	BH 100-0.7 / BH 160 / BH 160-4.8	C4038K30
AH 3138	AOH 3138	180	190	125	TR 210X4	4.34	5	M6	KM 36	MB 36	HN 36	HMV 36E	TE M6 01 or 02	HM 42T	HN 40	HMV 42E	BH 100-0.7 / BH 160 / BH 160-4.8	23138K
AH 3138 G	AOH 3138 G	180	190	125	M 200X3	4.34	4	M6	KM 36	MB 36	HN 36	HMV 36E	TE M6 01 or 02	KM 40	HN 40	HMV 40E	BH 100-0.7 / BH 160 / BH 160-4.8	23138K
AH 3238	AOH 3238	180	190	145	TR 210X4	5.21	5	M6	KM 36	MB 36	HN 36	HMV 36E	TE M6 01 or 02	HM 42T	HN 40	HMV 42E	BH 100-0.7 / BH 160 / BH 160-4.8	23238K
AH 3238 G	AOH 3238 G	180	190	145	M 200X3	5.21	4	M6	KM 36	MB 36	HN 36	HMV 36E	TE M6 01 or 02	KM 40	HN 40	HMV 40E	BH 100-0.7 / BH 160 / BH 160-4.8	23238K
AH 24138	AOH 24138	180	190	146	M 200X3	3.92	4	M6	KM 36	MB 36	HN 36	HMV 36E	TE M6 01 or 02	KM 40	HN 40	HMV 40E	BH 100-0.7 / BH 160 / BH 160-4.8	24138K30
AH 2338	AOH 2338	180	190	160	TR 210X4	5.91	5.75	M6	KM 36	MB 36	HN 36	HMV 36E	TE M6 01 or 02	HM 42T	HN 40	HMV 42E	BH 100-0.7 / BH 160 / BH 160-4.8	22338K
AH 2338 G	AOH 2338 G	180	190	160	M 200X3	5.91	4	M6	KM 36	MB 36	HN 36	HMV 36E	TE M6 01 or 02	KM 40	HN 40	HMV 40E	BH 100-0.7 / BH 160 / BH 160-4.8	22338K
AH 240 G	AOH 240 G	190	200	77	TR 210X4	2.88	3.7	M6	KM 38	MB 38	HN 38	HMV 38E	TE M6 01 or 02	HM 42T	HN 40	HMV 42E	BH 100-0.7 / BH 160 / BH 160-4.8	
AH 3940	AOH 3940	190	200	77	TR 210X4	2.62	3.7	M6	KM 38	MB 38	HN 38	HMV 38E	TE M6 01 or 02	HM 42T	HN 40	HMV 42E	BH 100-0.7 / BH 160 / BH 160-4.8	23940K
AH 3040	AOH 3040	190	200	102	TR 215X4	3.36	4.5	M6	KM 38	MB 38	HN 38	HMV 38E	TE M6 01 or 02	HML 43T	HN 40	HMV 42E	BH 100-0.7 / BH 160 / BH 160-4.8	23040K
AH 3040 G	AOH 3040 G	190	200	102	TR 210X4	3.36	3.8	M6	KM 38	MB 38	HN 38	HMV 38E	TE M6 01 or 02	HM 42T	HN 40	HMV 42E	BH 100-0.7 / BH 160 / BH 160-4.8	23040K
AH 2240	AOH 2240	190	200	118	TR 220X4	4.28	5	M6	KM 38	MB 38	HN 38	HMV 38E	TE M6 01 or 02	HM 3044	HN 44	HMV 44E	BH 100-0.7 / BH 160 / BH 160-4.8	22240K
AH 24040	AOH 24040	190	200	127	TR 210X4	3.55	3.8	M6	KM 38	MB 38	HN 38	HMV 38E	TE M6 01 or 02	HM 42T	HN 40	HMV 42E	BH 100-0.7 / BH 160 / BH 160-4.8	24040K30
AH 3140	AOH 3140	190	200	134	TR 220X4	4.98	5	M6	KM 38	MB 38	HN 38	HMV 38E	TE M6 01 or 02	HM 3044	HN 44	HMV 44E	BH 100-0.7 / BH 160 / BH 160-4.8	23140K
AH 3240	AOH 3240	190	200	153	TR 220X4	5.83	5.5	M6	KM 38	MB 38	HN 38	HMV 38E	TE M6 01 or 02	HM 3044	HN 44	HMV 44E	BH 100-0.7 / BH 160 / BH 160-4.8	23240K
AH 24140	AOH 24140	190	200	158	TR 210X4	4.51	3.8	M6	KM 38	MB 38	HN 38	HMV 38E	TE M6 01 or 02	HM 42T	HN 40	HMV 42E	BH 100-0.7 / BH 160 / BH 160-4.8	24140K30
AH 2340	AOH 2340	190	200	170	TR 220X4	6.75	6	M6	KM 38	MB 38	HN 38	HMV 38E	TE M6 01 or 02	HM 3044	HN 44	HMV 44E	BH 100-0.7 / BH 160 / BH 160-4.8	22340K
AH 3944	AOH 3944	200	220	77	TR 230X4	4.83	6.5	G 1/8	KM 40	MB 40	HN 40	HMV 40E	TE 1/8BSP 01	HM 46T		HMV 46E	BH 100-0.7 / BH 160 / BH 160-4.8	23944K
AH 244 G	AOH 244 G	200	220	85	TR 230X4	5.36	6.5	G 1/8	KM 40	MB 40	HN 40	HMV 40E	TE 1/8BSP 01	HM 46T		HMV 46E	BH 100-0.7 / BH 160 / BH 160-4.8	
AH 3044	AOH 3044	200	220	111	TR 235X4	6.59	8	G 1/8	KM 40	MB 40	HN 40	HMV 40E	TE 1/8BSP 01	HML 47T		HMV 47E	BH 100-0.7 / BH 160 / BH 160-4.8	23044K
AH 3044 G	AOH 3044 G	200	220	111	TR 230X4	6.20	6.5	G 1/8	KM 40	MB 40	HN 40	HMV 40E	TE 1/8BSP 01	HM 46T		HMV 46E	BH 100-0.7 / BH 160 / BH 160-4.8	23044K
AH 2244	AOH 2244	200	220	130	TR 240X4	8.13	9	G 1/8	KM 40	MB 40	HN 40	HMV 40E	TE 1/8BSP 01	HM 3048		HMV 48E	BH 100-0.7 / BH 160 / BH 160-4.8	22244K
AH 24044	AOH 24044	200	220	138	TR 230X4	7.38	6.5	G 1/8	KM 40	MB 40	HN 40	HMV 40E	TE 1/8BSP 01	HM 46T		HMV 46E	BH 100-0.7 / BH 160 / BH 160-4.8	24044K30
AH 3144	AOH 3144	200	220	145	TR 240X4	9.37	9	G 1/8	KM 40	MB 40	HN 40	HMV 40E	TE 1/8BSP 01	HM 3048		HMV 48E	BH 100-0.7 / BH 160 / BH 160-4.8	23144K
AH 24144	AOH 24144	200	220	170	TR 230X4	9.24	6.5	G 1/8	KM 40	MB 40	HN 40	HMV 40E	TE 1/8BSP 01	HM 46T		HMV 46E	BH 100-0.7 / BH 160 / BH 160-4.8	24144K30
AH 2344	AOH 2344	200	220	181	TR 240X4	12.00	9	G 1/8	KM 40	MB 40	HN 40	HMV 40E	TE 1/8BSP 01	HM 3048		HMV 48E	BH 100-0.7 / BH 160 / BH 160-4.8	22344K
AH 3948	AOH 3948	220	240	77	TR 250X4	5.29	6.5	G 1/8	HM 3044	MS 3044	HN 44	HMV 44E	TE 1/8BSP 01	HM 50T		HMV 50E	BH 100-0.7 / BH 160 / BH 160-4.8	23948K
AH 248	AOH 248	220	240	96	TR 260X4	7.41	8	G 1/8	HM 3044	MS 3044	HN 44	HMV 44E	TE 1/8BSP 01	HM 3052		HMV 52E	BH 100-0.7 / BH 160 / BH 160-4.8	
AH 3048	AOH 3048	220	240	116	TR 260X4	7.95	8	G 1/8	HM 3044	MS 3044	HN 44	HMV 44E	TE 1/8BSP 01	HM 3052		HMV 52E	BH 100-0.7 / BH 160 / BH 160-4.8	23048K
AH 24048	AOH 24048	220	240	138	TR 250X4	8.04	6.5	G 1/8	HM 3144	MS 3144-MS 3148	HN 44	HMV 44E	TE 1/8BSP 01	HM 50T		HMV 50E	BH 100-0.7 / BH 160 / BH 160-4.8	24048K30
AH 2248	AOH 2248	220	240	144	TR 260X4	10.20	9	G 1/8	HM 3044	MS 3044	HN 44	HMV 44E	TE 1/8BSP 01	HM 3052		HMV 52E	BH 100-0.7 / BH 160 / BH 160-4.8	22248K
AH 3148	AOH 3148	220	240	154	TR 260X4	10.97	9	G 1/8	HM 3144	MS 3144-MS 3148	HN 44	HMV 44E	TE 1/8BSP 01	HM 3052		HMV 52E	BH 100-0.7 / BH 160 / BH 160-4.8	23148K
AH 24148	AOH 24148	220	240	180	TR 260X4	11.40	8.5	G 1/4	HM 3144	MS 3144-MS 3148	HN 44	HMV 44E	TE 1/4BSP 01	HM 3052		HMV 52E	BH 100-0.7 / BH 160 / BH 160-4.8	24148K30
AH 2348	AOH 2348	220	240	189	TR 260X4	13.94	9	G 1/8	HM 3144	MS 3144-MS 3148	HN 44	HMV 44E	TE 1/8BSP 01	HM 3052		HMV 52E	BH 100-0.7 / BH 160 / BH 160-4.8	22348K



WITHDRAWAL SLEEVES
AH, AHX, AOH, AOHX



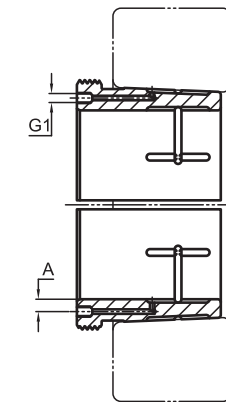
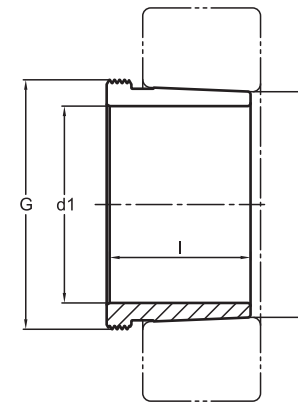
WITHDRAWAL SLEEVES AH, AHX

HYDRAULIC WITHDRAWAL SLEEVES
AOH, AOHX

Part Number	Hydraulic Part Number	d1 (mm)	d (mm)	l (mm)	G*	HYDRAULIC			NUT + MOUNTING LOCK		ASSEMBLY TOOL		DISASSEMBLY TOOL			Hydraulic Pump	Bearings
						Weight (Kg)	A	G1	Assembly Nut	Lockwasher / Locking Devices	Hook Spanner	Assembly Hydraulic Nut	Extension Tube	Withdrawal Nut	Withdrawal Hook Spanner		
AH 3952	AOH 3952	240	260	94	TR 275X4	7.36	8	G 1/8	HM 3048	MS 3048-MS 3052		HMV 48E	TE 1/8BSP 01	HMLL 55T		BH 100-0.7 / BH 160 / BH 160-4.8	23952K
AH 3952 G	AOH 3952 G	240	260	94	TR 280X4	7.77	8	G 1/8	HM 3048	MS 3048-MS 3052		HMV 48E	TE 1/8BSP 01	HM 3056	HMV 56E	BH 100-0.7 / BH 160 / BH 160-4.8	23952K
AH 252	AOH 252	240	260	105	TR 280X4	8.83	8	G 1/8	HM 3048	MS 3048-MS 3052		HMV 48E	TE 1/8BSP 01	HM 3056	HMV 56E	BH 100-0.7 / BH 160 / BH 160-4.8	
AH 3052	AOH 3052	240	260	128	TR 280X4	9.70	8	G 1/8	HM 3048	MS 3048-MS 3052		HMV 48E	TE 1/8BSP 01	HM 3056	HMV 56E	BH 100-0.7 / BH 160 / BH 160-4.8	23052K C3052K
AH 2252	AOH 2252	240	260	155	TR 290X4	14.00	9	G 1/8	HM 3048	MS 3048-MS 3052		HMV 48E	TE 1/8BSP 01	HM 58T	HMV 58E	BH 100-0.7 / BH 160 / BH 160-4.8	22252K
AH 2252 G	AOH 2252 G	240	260	155	TR 280X4	14.00	9	G 1/8	HM 3048	MS 3048-MS 3052		HMV 48E	TE 1/8BSP 01	HM 3056	HMV 56E	BH 100-0.7 / BH 160 / BH 160-4.8	22252K
AH 24052	AOH 24052	240	260	162	TR 270X4	10.43	6.5	G 1/8	HM 3148	MS 3144-MS 3148		HMV 48E	TE 1/8BSP 01	HM 54T	HMV 54E	BH 100-0.7 / BH 160 / BH 160-4.8	24052K30
AH 24052 G	AOH 24052 G	240	260	162	TR 280X4	10.43	7.5	G 1/8	HM 3148	MS 3144-MS 3148		HMV 48E	TE 1/8BSP 01	HM 3056	HMV 56E	BH 100-0.7 / BH 160 / BH 160-4.8	24052K30
AH 3152	AOH 3152	240	260	172	TR 290X4	14.39	9	G 1/8	HM 3148	MS 3144-MS 3148		HMV 48E	TE 1/8BSP 01	HM 58T	HMV 58E	BH 100-0.7 / BH 160 / BH 160-4.8	23152K
AH 3152 G	AOH 3152 G	240	260	172	TR 280X4	13.60	9	G 1/8	HM 3148	MS 3144-MS 3148		HMV 48E	TE 1/8BSP 01	HM 3056	HMV 56E	BH 100-0.7 / BH 160 / BH 160-4.8	23152K C3152K
AH 24152	AOH 24152	240	260	202	TR 280X4	13.80	8.5	G 1/4	HM 3148	MS 3144-MS 3148		HMV 48E	TE 1/4BSP 01	HM 3056	HMV 56E	BH 100-0.7 / BH 160 / BH 160-4.8	24152K30
AH 2352	AOH 2352	240	260	205	TR 290X4	17.60	9	G 1/8	HM 3148	MS 3144-MS 3148		HMV 48E	TE 1/8BSP 01	HM 58T	HMV 58E	BH 100-0.7 / BH 160 / BH 160-4.8	22352K 32352K
AH 2352 G	AOH 2352 G	240	260	205	TR 280X4	17.60	9	G 1/8	HM 3148	MS 3144-MS 3148		HMV 48E	TE 1/8BSP 01	HM 3056	HMV 56E	BH 100-0.7 / BH 160 / BH 160-4.8	22352K 32352K
AH 3956	AOH 3956	260	280	94	TR 295X4	8.02	8	G 1/8	HM 3052	MS 3048-MS 3052		HMV 52E	TE 1/8BSP 01	HMLL 59T		BH 100-0.7 / BH 160 / BH 160-4.8	23956K
AH 3956 G	AOH 3956 G	260	280	94	TR 300X4	8.30	8	G 1/8	HM 3052	MS 3048-MS 3052		HMV 52E	TE 1/8BSP 01	HM 3060	HMV 60E	BH 100-0.7 / BH 160 / BH 160-4.8	23956K
AH 256	AOH 256	260	280	105	TR 300X4	9.52	8	G 1/8	HM 3052	MS 3048-MS 3052		HMV 52E	TE 1/8BSP 01	HM 3060	HMV 60E	BH 100-0.7 / BH 160 / BH 160-4.8	
AH 3056	AOH 3056	260	280	131	TR 300X4	10.61	8	G 1/8	HM 3052	MS 3048-MS 3052		HMV 52E	TE 1/8BSP 01	HM 3060	HMV 60E	BH 100-0.7 / BH 160 / BH 160-4.8	23056K C3056K
AH 2256	AOH 2256	260	280	155	TR 310X5	15.20	9	G 1/8	HM 3052	MS 3048-MS 3052		HMV 52E	TE 1/8BSP 01	HM 62T	HMV 62E	BH 100-0.7 / BH 160 / BH 160-4.8	22256K
AH 2256 G	AOH 2256 G	260	280	155	TR 300X4	15.20	9	G 1/8	HM 3052	MS 3048-MS 3052		HMV 52E	TE 1/8BSP 01	HM 3160	HMV 60E	BH 100-0.7 / BH 160 / BH 160-4.8	22256K
AH 24056	AOH 24056	260	280	162	TR 290X4	11.40	6.5	G 1/8	HM 3152	MS 3152-MS 3156		HMV 52E	TE 1/8BSP 01	HM 58T	HMV 58E	BH 100-0.7 / BH 160 / BH 160-4.8	24056K30
AH 24056 G	AOH 24056 G	260	280	162	TR 300X4	11.40	7.5	G 1/8	HM 3152	MS 3152-MS 3156		HMV 52E	TE 1/8BSP 01	HM 3160	HMV 60E	BH 100-0.7 / BH 160 / BH 160-4.8	24056K30
AH 3156	AOH 3156	260	280	175	TR 310X5	15.80	9	G 1/8	HM 3152	MS 3152-MS 3156		HMV 52E	TE 1/8BSP 01	HM 62T	HMV 62E	BH 100-0.7 / BH 160 / BH 160-4.8	23156K
AH 3156 G	AOH 3156 G	260	280	175	TR 300X4	15.80	9	G 1/8	HM 3152	MS 3152-MS 3156		HMV 52E	TE 1/8BSP 01	HM 3160	HMV 60E	BH 100-0.7 / BH 160 / BH 160-4.8	23156K C3156K
AH 24156	AOH 24156	260	280	202	TR 300X4	15.20	8.7	G 1/4	HM 3152	MS 3152-MS 3156		HMV 52E	TE 1/4BSP 01	HM 3160	HMV 60E	BH 100-0.7 / BH 160 / BH 160-4.8	24156K30
AH 2356	AOH 2356	260	280	212	TR 310X5	19.80	9	G 1/8	HM 3152	MS 3152-MS 3156		HMV 52E	TE 1/8BSP 01	HM 62T	HMV 62E	BH 100-0.7 / BH 160 / BH 160-4.8	22356K 23256K
AH 2356 G	AOH 2356 G	260	280	212	TR 300X4	19.80	9	G 1/8	HM 3152	MS 3152-MS 3156		HMV 52E	TE 1/8BSP 01	HM 3160	HMV 60E	BH 100-0.7 / BH 160 / BH 160-4.8	22356K 23256K
AH 3960	AOH 3960	280	300	112	TR 315X5	10.50	8	G 1/8	HM 3056	MS 3056		HMV 56E	TE 1/8BSP 01	HMLL 63T		BH 100-0.7 / BH 160 / BH 160-4.8	23960K
AH 3960 G	AOH 3960 G	280	300	112	TR 320X5	10.80	8	G 1/8	HM 3056	MS 3056		HMV 56E	TE 1/8BSP 01	HM 3064	HMV 64E	BH 100-0.7 / BH 160 / BH 160-4.8	23960K
AH 3060	AOH 3060	280	300	145	TR 320X5	14.40	9	G 1/8	HM 3056	MS 3056		HMV 56E	TE 1/8BSP 01	HM 3064	HMV 64E	BH 100-0.7 / BH 160 / BH 160-4.8	23060K C3060K
AH 2260	AOH 2260	280	300	170	TR 330X5	18.10	9	G 1/8	HM 3056	MS 3056		HMV 56E	TE 1/8BSP 01	HM 66T	HMV 66E	BH 100-0.7 / BH 160 / BH 160-4.8	22260K
AH 2260 G	AOH 2260 G	280	300	170	TR 320X5	18.10	9	G 1/8	HM 3056	MS 3056		HMV 56E	TE 1/8BSP 01	HM 3164	HMV 64E	BH 100-0.7 / BH 160 / BH 160-4.8	22260K
AH 24060	AOH 24060	280	300	184	TR 310X5	14.00	6.2	G 1/8	HM 3156	MS 3152-MS 3156		HMV 56E	TE 1/8BSP 01	HM 62T	HMV 62E	BH 100-0.7 / BH 160 / BH 160-4.8	24060K30
AH 24060 G	AOH 24060 G	280	300	184	TR 320X5	14.00	8	G 1/8	HM 3156	MS 3152-MS 3156		HMV 56E	TE 1/8BSP 01	HM 3164	HMV 64E	BH 100-0.7 / BH 160 / BH 160-4.8	24060K30 C4060K30
AH 3160	AOH 3160	280	300	192	TR 330X5	19.00	9	G 1/8	HM 3156	MS 3152-MS 3156		HMV 56E	TE 1/8BSP 01	HM 66T	HMV 66E	BH 100-0.7 / BH 160 / BH 160-4.8	23160K
AH 3160 G	AOH 3160 G	280	300	192	TR 320X5	19.00	9	G 1/8	HM 3156	MS 3152-MS 3156		HMV 56E	TE 1/8BSP 01	HM 3164	HMV 64E	BH 100-0.7 / BH 160 / BH 160-4.8	23160K C3160K
AH 24160	AOH 24160	280	300	224	TR 320X5	18.20	8.7	G 1/4	HM 3156	MS 3152-MS 3156		HMV 56E	TE 1/4BSP 01	HM 3164	HMV 64E	BH 100-0.7 / BH 160 / BH 160-4.8	24160K30
AH 3260	AOH 3260	280	300	228	TR 330X5	23.20	9	G 1/8	HM 3156	MS 3152-MS 3156		HMV 56E	TE 1/8BSP 01	HM 66T	HMV 66E	BH 100-0.7 / BH 160 / BH 160-4.8	23260K 22360K
AH 3260 G	AOH 3260 G	280	300	228	TR 320X5	23.20	9	G 1/8	HM 3156	MS 3152-MS 3156		HMV 56E	TE 1/8BSP 01	HM 3164	HMV 64E	BH 100-0.7 / BH 160 / BH 160-4.8	23260K 22360K



WITHDRAWAL SLEEVES
AH, AHX, AOH, AOHX



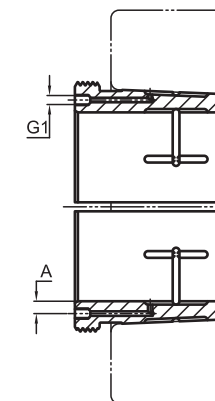
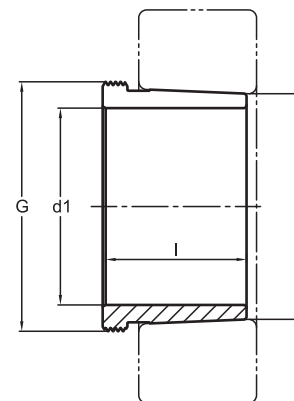
WITHDRAWAL SLEEVES AH, AHX

HYDRAULIC WITHDRAWAL SLEEVES
AOH, AOHX

Part Number	Hydraulic Part Number	d1 (mm)	d (mm)	l (mm)	G*	HYDRAULIC			NUT + MOUNTING LOCK		ASSEMBLY TOOL			DISASSEMBLY TOOL			Hydraulic Pump	Bearings
						Weight (Kg)	A	G1	Assembly Nut	Lockwasher / Locking Devices	Hook Spanner	Assembly Hydraulic Nut	Extension Tube	Withdrawal Nut	Withdrawal Hook Spanner	Withdrawal Hydraulic Nut		
AH 3964	AOH 3964	300	320	112	TR 335X5	11.20	8	G 1/8	HM 3060	MS 3060		HMV 60E	TE 1/8BSP 01	HMLL 67T		BH 100-0.7 / BH 160 / BH 160-4.8	23964K	
AH 3964 G	AOH 3964 G	300	320	112	TR 340X5	11.50	8.7	G 1/4	HM 3060	MS 3060		HMV 60E	TE 1/4BSP 01	HM 3068		HMV 68E	BH 100-0.7 / BH 160 / BH 160-4.8	23964K
AH 3064	AOH 3064	300	320	149	TR 345X5	14.80	9	G 1/4	HM 3060	MS 3060		HMV 60E	TE 1/4BSP 01	HML 69T		HMV 69E	BH 100-0.7 / BH 160 / BH 160-4.8	23064K
AH 3064 G	AOH 3064 G	300	320	149	TR 340X5	14.80	9	G 1/4	HM 3060	MS 3060		HMV 60E	TE 1/4BSP 01	HM 3068		HMV 68E	BH 100-0.7 / BH 160 / BH 160-4.8	23064K
AH 2264	AOH 2264	300	320	180	TR 350X5	20.20	9	G 1/4	HM 3060	MS 3060		HMV 60E	TE 1/4BSP 01	HM 70T		HMV 70E	BH 100-0.7 / BH 160 / BH 160-4.8	22264K
AH 2264 G	AOH 2264 G	300	320	180	TR 340X5	20.20	9	G 1/4	HM 3060	MS 3060		HMV 60E	TE 1/4BSP 01	HM 3168		HMV 68E	BH 100-0.7 / BH 160 / BH 160-4.8	22264K
AH 24064	AOH 24064	300	320	184	TR 330X5	14.80	6.2	G 1/8	HM 3160	MS 3160		HMV 60E	TE 1/8BSP 01	HM 66T		HMV 66E	BH 100-0.7 / BH 160 / BH 160-4.8	24064K30
AH 24064 G	AOH 24064 G	300	320	184	TR 340X5	15.80	8	G 1/8	HM 3160	MS 3160		HMV 60E	TE 1/8BSP 01	HM 3168		HMV 68E	BH 100-0.7 / BH 160 / BH 160-4.8	24064K30
AH 3164	AOH 3164	300	320	209	TR 350X5	22.60	9	G 1/4	HM 3160	MS 3160		HMV 60E	TE 1/4BSP 01	HM 70T		HMV 70E	BH 100-0.7 / BH 160 / BH 160-4.8	23164K
AH 3164 G	AOH 3164 G	300	320	209	TR 340X5	22.60	9	G 1/4	HM 3160	MS 3160		HMV 60E	TE 1/4BSP 01	HM 3168		HMV 68E	BH 100-0.7 / BH 160 / BH 160-4.8	23164K
AH 24164	AOH 24164	300	320	242	TR 340X5	21.20	9	G 1/4	HM 3160	MS 3160		HMV 60E	TE 1/4BSP 01	HM 3168		HMV 68E	BH 100-0.7 / BH 160 / BH 160-4.8	24164K30
AH 3264	AOH 3264	300	320	246	TR 350X5	27.40	9	G 1/4	HM 3160	MS 3160		HMV 60E	TE 1/4BSP 01	HM 70T		HMV 70E	BH 100-0.7 / BH 160 / BH 160-4.8	23264K
AH 3264 G	AOH 3264 G	300	320	246	TR 340X5	26.00	9	G 1/4	HM 3160	MS 3160		HMV 60E	TE 1/4BSP 01	HM 3168		HMV 68E	BH 100-0.7 / BH 160 / BH 160-4.8	23264K
AH 3968	AOH 3968	320	340	112	TR 355X5	11.90	8	G 1/8	HM 3064	MS 3064-MS 3068		HMV 64E	TE 1/8BSP 01	HMLL 71T			BH 100-0.7 / BH 160 / BH 160-4.8	23968K
AH 3968 G	AOH 3968 G	320	340	112	TR 360X5	12.30	8.7	G 1/4	HM 3064	MS 3064-MS 3068		HMV 64E	TE 1/4BSP 01	HM 3072		HMV 72E	BH 100-0.7 / BH 160 / BH 160-4.8	23968K
AH 3068	AOH 3068	320	340	162	TR 365X5	17.30	9	G 1/4	HM 3064	MS 3064-MS 3068		HMV 64E	TE 1/4BSP 01	HML 73T		HMV 73E	BH 100-0.7 / BH 160 / BH 160-4.8	23068K
AH 3068 G	AOH 3068 G	320	340	162	TR 360X5	17.30	9	G 1/4	HM 3064	MS 3064-MS 3068		HMV 64E	TE 1/4BSP 01	HM 3072		HMV 72E	BH 100-0.7 / BH 160 / BH 160-4.8	23068K
AH 24068	AOH 24068	320	340	206	TR 360X5	19.20	8	G 1/8	HM 3164	MS 3164		HMV 64E	TE 1/8BSP 01	HM 3172		HMV 72E	BH 100-0.7 / BH 160 / BH 160-4.8	24068K30
AH 3168	AOH 3168	320	340	225	TR 370X5	26.20	9	G 1/4	HM 3164	MS 3164		HMV 64E	TE 1/4BSP 01	HM 74T		HMV 74E	BH 100-0.7 / BH 160 / BH 160-4.8	23168K
AH 3168 G	AOH 3168 G	320	340	225	TR 360X5	24.40	9	G 1/4	HM 3064	MS 3064-MS 3068		HMV 64E	TE 1/4BSP 01	HM 3172		HMV 72E	BH 100-0.7 / BH 160 / BH 160-4.8	23168K
AH 3268	AOH 3268	320	340	264	TR 370X5	31.80	9	G 1/4	HM 3164	MS 3164		HMV 64E	TE 1/4BSP 01	HM 74T		HMV 74E	BH 100-0.7 / BH 160 / BH 160-4.8	23268K
AH 3268 G	AOH 3268 G	320	340	264	TR 360X5	29.80	9	G 1/4	HM 3164	MS 3164		HMV 64E	TE 1/4BSP 01	HM 3172		HMV 72E	BH 100-0.7 / BH 160 / BH 160-4.8	23268K
AH 24168	AOH 24168	320	340	269	TR 360X5	25.40	9	G 1/4	HM 3164	MS 3164		HMV 64E	TE 1/4BSP 01	HM 3172		HMV 72E	BH 100-0.7 / BH 160 / BH 160-4.8	24168K30
AH 3972	AOH 3972	340	360	112	TR 375X5	12.60	8	G 1/8	HM 3068			HMV 68E	TE 1/8BSP 01	HMLL 75T			BH 100-0.7 / BH 160 / BH 160-4.8	23972K
AH 3972 G	AOH 3972 G	340	360	112	TR 380X5	13.00	8.7	G 1/4	HM 3068	MS 3064-MS 3068		HMV 68E	TE 1/4BSP 01	HM 3076		HMV 76E	BH 100-0.7 / BH 160 / BH 160-4.8	23972K
AH 3072	AOH 3072	340	360	167	TR 385X5	19.00	9	G 1/4	HM 3068	MS 3064-MS 3068		HMV 68E	TE 1/4BSP 01	HML 77T		HMV 77E	BH 100-0.7 / BH 160 / BH 160-4.8	23072K
AH 3072 G	AOH 3072 G	340	360	167	TR 380X5	18.20	9	G 1/4	HM 3068	MS 3064-MS 3068		HMV 68E	TE 1/4BSP 01	HM 3076		HMV 76E	BH 100-0.7 / BH 160 / BH 160-4.8	23072K
AH 24072	AOH 24072	340	360	206	TR 380X5	22.70	8	G 1/8	HM 3168	MS 3168-MS 3172		HMV 68E	TE 1/8BSP 01	HM 3176		HMV 76E	BH 100-0.7 / BH 160 / BH 160-4.8	24072K30
AH 3172	AOH 3172	340	360	229	TR 400X5	29.60	9	G 1/4	HM 3168	MS 3168-MS 3172		HMV 68E	TE 1/4BSP 01	HM 3180		HMV 80E	BH 100-0.7 / BH 160 / BH 160-4.8	23172K
AH 3172 G	AOH 3172 G	340	360	229	TR 380X5	29.60	9	G 1/4	HM 3068	MS 3064-MS 3068		HMV 68E	TE 1/4BSP 01	HM 3176		HMV 76E	BH 100-0.7 / BH 160 / BH 160-4.8	23172K
AH 24172	AOH 24172	340	360	269	TR 380X5	27.00	9	G 1/4	HM 3168	MS 3168-MS 3172		HMV 68E	TE 1/4BSP 01	HM 3176		HMV 76E	BH 100-0.7 / BH 160 / BH 160-4.8	24172K30
AH 3272	AOH 3272	340	360	274	TR 400X5	41.50	9	G 1/4	HM 3168	MS 3168-MS 3172		HMV 68E	TE 1/4BSP 01	HM 3180		HMV 80E	BH 100-0.7 / BH 160 / BH 160-4.8	23272K
AH 3272 G	AOH 3272 G	340	360	274	TR 380X5	41.50	9	G 1/4	HM 3168	MS 3168-MS 3172		HMV 68E	TE 1/4BSP 01	HM 3176		HMV 76E	BH 100-0.7 / BH 160 / BH 160-4.8	23272K
AH 3976	AOH 3976	360	380	130	TR 395X5	15.40	8	G 1/8				HMV 72E	TE 1/8BSP 01	HMLL 79T			BH 100-0.7 / BH 160 / BH 160-4.8	23976K
AH 3976 G	AOH 3976 G	360	380	130	TR 400X5	16.10	9	G 1/4	HM 3072	MS 3072		HMV 72E	TE 1/4BSP 01	HM 3080		HMV 80E	BH 100-0.7 / BH 160 / BH 160-4.8	23976K
AH 3076	AOH 3076	360	380	170	TR 410X5	21.40	9	G 1/4	HM 3072	MS 3072		HMV 72E	TE 1/4BSP 01	HML 82T		HMV 82E	BH 100-0.7 / BH 160 / BH 160-4.8	23076K
AH 3076 G	AOH 3076 G	360	380	170	TR 400X5	21.40	9	G 1/4	HM 3072	MS 3072		HMV 72E	TE 1/4BSP 01	HM 3080		HMV 80E	BH 100-0.7 / BH 160 / BH 160-4.8	23076K



WITHDRAWAL SLEEVES
AH, AHX, AOH, AOHX



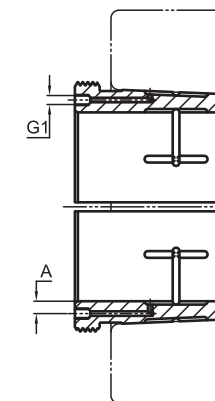
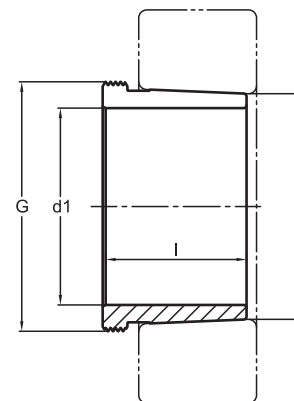
WITHDRAWAL SLEEVES AH, AHX

HYDRAULIC WITHDRAWAL SLEEVES
AOH, AOHX

Part Number	Hydraulic Part Number	d1 (mm)	d (mm)	l (mm)	G*	Weight (Kg)	HYDRAULIC		NUT + MOUNTING LOCK		ASSEMBLY TOOL		DISASSEMBLY TOOL			Hydraulic Pump	Bearings
							A	G1	Assembly Nut	Lockwasher / Locking Devices	Hook Spanner	Assembly Hydraulic Nut	Extension Tube	Withdrawal Nut	Withdrawal Hook Spanner		
AH 24076	AOH 24076	360	380	208	TR 400X5	21.40	8	G 1/8	HM 3172	MS 3168-MS 3172	HMV 72E	TE 1/8BSP 01	HM 3180	HMV 80E	BH 100-0.7 / BH 160 / BH 160-4.8	24076K30	
AH 3176	AOH 3176	360	380	232	TR 420X5	32.20	9	G 1/4	HM 3172	MS 3168-MS 3172	HMV 72E	TE 1/4BSP 01	HM 3184	HMV 84E	BH 100-0.7 / BH 160 / BH 160-4.8	23176K	
AH 3176 G	AOH 3176 G	360	380	232	TR 400X5	35.70	9	G 1/4	HM 3172	MS 3168-MS 3172	HMV 72E	TE 1/4BSP 01	HM 3180	HMV 80E	BH 100-0.7 / BH 160 / BH 160-4.8	23176K C3176K	
AH 24176	AOH 24176	360	380	271	TR 400X5	28.80	9	G 1/4	HM 3172	MS 3168-MS 3172	HMV 72E	TE 1/4BSP 01	HM 3180	HMV 80E	BH 100-0.7 / BH 160 / BH 160-4.8	24176K30	
AH 3276	AOH 3276	360	380	284	TR 420X5	45.60	9	G 1/4	HM 3172	MS 3168-MS 3172	HMV 72E	TE 1/4BSP 01	HM 3184	HMV 84E	BH 100-0.7 / BH 160 / BH 160-4.8	23276K 22376K	
AH 3276 G	AOH 3276 G	360	380	284	TR 400X5	45.60	9	G 1/4	HM 3172	MS 3168-MS 3172	HMV 72E	TE 1/4BSP 01	HM 3180	HMV 80E	BH 100-0.7 / BH 160 / BH 160-4.8	23276K 22376K	
AH 3980	AOH 3980	380	400	130	TR 415X5	16.60	8	G 1/8	HM 3076	MS 3076-MS 3080	HMV 76E	TE 1/8BSP 01	HMLL 83T		BH 100-0.7 / BH 160 / BH 160-4.8	23980K	
AH 3980 G	AOH 3980 G	380	400	130	TR 420X5	17.00	9	G 1/4	HM 3076	MS 3076-MS 3080	HMV 76E	TE 1/4BSP 01	HM 3084	HMV 84E	BH 100-0.7 / BH 160 / BH 160-4.8	23980K	
AH 3080	AOH 3080	380	400	183	TR 430X5	27.30	9	G 1/4	HM 3076	MS 3076-MS 3080	HMV 76E	TE 1/4BSP 01	HML 86T	HMV 86E	BH 100-0.7 / BH 160 / BH 160-4.8	23080K	
AH 3080 G	AOH 3080 G	380	400	183	TR 420X5	27.30	9	G 1/4	HM 3076	MS 3076-MS 3080	HMV 76E	TE 1/4BSP 01	HM 3084	HMV 84E	BH 100-0.7 / BH 160 / BH 160-4.8	23080K C3080K	
AH 24080	AOH 24080	380	400	228	TR 420X5	27.10	8.7	G 1/4	HM 3176	MS 3176	HMV 76E	TE 1/4BSP 01	HM 3184	HMV 84E	BH 100-0.7 / BH 160 / BH 160-4.8	24080K30	
AH 3180	AOH 3180	380	400	240	TR 440X5	35.40	9	G 1/4	HM 3176	MS 3176	HMV 76E	TE 1/4BSP 01	HM 3188	HMV 88E	BH 100-0.7 / BH 160 / BH 160-4.8	23180K	
AH 3180 G	AOH 3180 G	380	400	240	TR 420X5	32.00	9	G 1/4	HM 3176	MS 3176	HMV 76E	TE 1/4BSP 01	HM 3184	HMV 84E	BH 100-0.7 / BH 160 / BH 160-4.8	23180K C3180K	
AH 24180	AOH 24180	380	400	278	TR 420X5	34.40	9	G 1/4	HM 3176	MS 3176	HMV 76E	TE 1/4BSP 01	HM 3184	HMV 84E	BH 100-0.7 / BH 160 / BH 160-4.8	24180K30	
AH 3280	AOH 3280	380	400	302	TR 440X5	51.70	9	G 1/4	HM 3176	MS 3176	HMV 76E	TE 1/4BSP 01	HM 3188	HMV 88E	BH 100-0.7 / BH 160 / BH 160-4.8	22380K 23280K	
AH 3280 G	AOH 3280 G	380	400	302	TR 420X5	51.70	9	G 1/4	HM 3176	MS 3176	HMV 76E	TE 1/4BSP 01	HM 3184	HMV 84E	BH 100-0.7 / BH 160 / BH 160-4.8	22380K 23280K	
AH 3984	AOH 3984	400	420	130	TR 435X5	17.50	8	G 1/8	HM 3080	MS 3076-MS 3080	HMV 80E	TE 1/8BSP 01	HMLL 87T		BH 100-0.7 / BH 160 / BH 160-4.8	23984K	
AH 3984 G	AOH 3984 G	400	420	130	TR 440X5	17.80	9	G 1/4	HM 3080	MS 3076-MS 3080	HMV 80E	TE 1/4BSP 01	HM 3088	HMV 88E	BH 100-0.7 / BH 160 / BH 160-4.8	23984K	
AH 3084	AOH 3084	400	420	186	TR 450X5	26.00	9	G 1/4	HM 3080	MS 3076-MS 3080	HMV 80E	TE 1/4BSP 01	HML 90T	HMV 90E	BH 100-0.7 / BH 160 / BH 160-4.8	23084K	
AH 3084 G	AOH 3084 G	400	420	186	TR 440X5	29.00	9	G 1/4	HM 3080	MS 3076-MS 3080	HMV 80E	TE 1/4BSP 01	HM 3088	HMV 88E	BH 100-0.7 / BH 160 / BH 160-4.8	23084K C3084K	
AH 24084	AOH 24084	400	420	230	TR 440X5	27.40	8.7	G 1/4	HM 3180	MS 3180-MS 3184	HMV 80E	TE 1/4BSP 01	HM 3188	HMV 88E	BH 100-0.7 / BH 160 / BH 160-4.8	24084K30	
AH 3184	AOH 3184	400	420	266	TR 460X5	46.50	9	G 1/4	HM 3180	MS 3180-MS 3184	HMV 80E	TE 1/4BSP 01	HM 3192	HMV 92E	BH 100-0.7 / BH 160 / BH 160-4.8	23184K	
AH 3184 G	AOH 3184 G	400	420	266	TR 440X5	37.60	9	G 1/4	HM 3180	MS 3180-MS 3184	HMV 80E	TE 1/4BSP 01	HM 3188	HMV 88E	BH 100-0.7 / BH 160 / BH 160-4.8	23184K C3184K	
AH 24184	AOH 24184	400	420	310	TR 440X5	40.30	9	G 1/4	HM 3180	MS 3180-MS 3184	HMV 80E	TE 1/4BSP 01	HM 3188	HMV 88E	BH 100-0.7 / BH 160 / BH 160-4.8	24184K30	
AH 3284	AOH 3284	400	420	321	TR 460X5	58.90	9	G 1/4	HM 3180	MS 3180-MS 3184	HMV 80E	TE 1/4BSP 01	HM 3192	HMV 92E	BH 100-0.7 / BH 160 / BH 160-4.8	23284K	
AH 3284 G	AOH 3284 G	400	420	321	TR 440X5	58.90	9	G 1/4	HM 3180	MS 3180-MS 3184	HMV 80E	TE 1/4BSP 01	HM 3188	HMV 88E	BH 100-0.7 / BH 160 / BH 160-4.8	23284K	
AH 3988	AOH 3988	420	440	145	TR 460X5	21.50	9	G 1/4	HM 3084	MS 3084	HMV 84E	TE 1/4BSP 01	HM 3092	HMV 92E	BH 100-0.7 / BH 160 / BH 160-4.8	23988K	
AHX 3088	AOHX 3088	420	440	194	TR 470X5	28.60	9	G 1/4	HM 3084	MS 3084	HMV 84E	TE 1/4BSP 01	HML 94T	HMV 94E	BH 100-0.7 / BH 160 / BH 160-4.8	23088K	
AHX 3088 G	AOHX 3088 G	420	440	194	TR 460X5	27.60	9	G 1/4	HM 3084	MS 3084	HMV 84E	TE 1/4BSP 01	HM 3092	HMV 92E	BH 100-0.7 / BH 160 / BH 160-4.8	23088K C3088K	
AH 24088	AOH 24088	420	440	242	TR 460X5	29.60	8.7	G 1/4	HM 3184	MS 3180-MS 3184	HMV 84E	TE 1/4BSP 01	HM 3192	HMV 92E	BH 100-0.7 / BH 160 / BH 160-4.8	24088K30	
AHX 3188	AOHX 3188	420	440	270	TR 480X5	49.80	9	G 1/4	HM 3184	MS 3180-MS 3184	HMV 88E	TE 1/4BSP 01	HM 3196	HMV 96E	BH 100-0.7 / BH 160 / BH 160-4.8	23188K	
AHX 3188 G	AOHX 3188 G	420	440	270	TR 460X5	49.80	9	G 1/4	HM 3184	MS 3180-MS 3184	HMV 84E	TE 1/4BSP 01	HM 3192	HMV 92E	BH 100-0.7 / BH 160 / BH 160-4.8	23188K C3188K	
AH 24188	AOH 24188	420	440	310	TR 460X5	42.30	9	G 1/4	HM 3184	MS 3180-MS 3184	HMV 84E	TE 1/4BSP 01	HM 3192	HMV 92E	BH 100-0.7 / BH 160 / BH 160-4.8	24188K30	
AHX 3288	AOHX 3288	420	440	330	TR 480X5	63.80	9	G 1/4	HM 3184	MS 3180-MS 3184	HMV 84E	TE 1/4BSP 01	HM 3196	HMV 96E	BH 100-0.7 / BH 160 / BH 160-4.8	23288K	
AHX 3288 G	AOHX 3288 G	420	440	330	TR 460X5	63.80	9	G 1/4	HM 3184	MS 3180-MS 3184	HMV 84E	TE 1/4BSP 01	HM 3192	HMV 92E	BH 100-0.7 / BH 160 / BH 160-4.8	23288K	
AH 3992	AOH 3992	440	460	145	TR 480X5	22.50	9	G 1/4	HM 3088	MS 3088-MS 3092	HMV 88E	TE 1/4BSP 01	HM 3096	HMV 96E	BH 100-0.7 / BH 160 / BH 160-4.8	23992K	



WITHDRAWAL SLEEVES
AH, AHX, AOH, AOHX



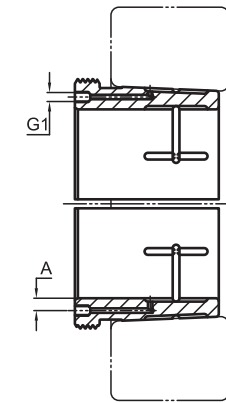
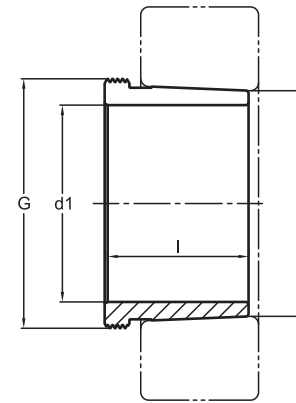
WITHDRAWAL SLEEVES AH, AHX

HYDRAULIC WITHDRAWAL SLEEVES
AOH, AOHX

Part Number	Hydraulic Part Number	d1 (mm)	d (mm)	l (mm)	G*	HYDRAULIC		NUT + MOUNTING LOCK		ASSEMBLY TOOL		DISASSEMBLY TOOL			Hydraulic Pump	Bearings	
						Weight (Kg)	A	G1	Assembly Nut	Lockwasher / Locking Devices	Hook Spanner	Assembly Hydraulic Nut	Extension Tube	Withdrawal Nut			Withdrawal Hook Spanner
AHX 3092	AOHX 3092	440	460	202	TR 490X5	31.60	9	G 1/4	HM 3088	MS 3088-MS 3092		HMV 88E	TE 1/4BSP 01	HML 98T	HMV 98E	BH 100-0.7 / BH 160 / BH 160-4.8	23092K
AHX 3092 G	AOHX 3092 G	440	460	202	TR 480X5	35.20	9	G 1/4	HM 3088	MS 3088-MS 3092		HMV 88E	TE 1/4BSP 01	HM 3096	HMV 96E	BH 100-0.7 / BH 160 / BH 160-4.8	23092K C3092K
AH 24092	AOH 24092	440	460	250	TR 480X5	34.70	9	G 1/4	HM 3188	MS 3188-MS 3192		HMV 88E	TE 1/4BSP 01	HM 3196	HMV 96E	BH 100-0.7 / BH 160 / BH 160-4.8	24092K30
AHX 3192	AOHX 3192	440	460	285	TR 510X6	44.60	9	G 1/4	HM 3188	MS 3188-MS 3192		HMV 88E	TE 1/4BSP 01	HM 102T	HMV 102E	BH 100-0.7 / BH 160 / BH 160-4.8	23192K
AHX 3192 G	AOHX 3192 G	440	460	285	TR 480X5	44.90	9	G 1/4	HM 3188	MS 3188-MS 3192		HMV 88E	TE 1/4BSP 01	HM 3196	HMV 96E	BH 100-0.7 / BH 160 / BH 160-4.8	23192K C3192K
AH 24192	AOH 24192	440	460	332	TR 480X5	44.20	9	G 1/4	HM 3188	MS 3188-MS 3192		HMV 88E	TE 1/4BSP 01	HM 3196	HMV 96E	BH 100-0.7 / BH 160 / BH 160-4.8	24192K30 C4192K30
AHX 3292	AOHX 3292	440	460	349	TR 510X6	74.50	9	G 1/4	HM 3188	MS 3188-MS 3192		HMV 88E	TE 1/4BSP 01	HM 102T	HMV 102E	BH 100-0.7 / BH 160 / BH 160-4.8	23292K
AHX 3292 G	AOHX 3292 G	440	460	349	TR 480X5	74.50	9	G 1/4	HM 3188	MS 3188-MS 3192		HMV 88E	TE 1/4BSP 01	HM 3196	HMV 96E	BH 100-0.7 / BH 160 / BH 160-4.8	23292K
AH 3996	AOH 3996	460	480	158	TR 500X5	26.00	9	G 1/4	HM 3092	MS 3088-MS 3092		HMV 92E	TE 1/4BSP 01	HM 30/500	HMV 100E	BH 100-0.7 / BH 160 / BH 160-4.8	23996K
AHX 3096	AOHX 3096	460	480	205	TR 520X6	39.20	9	G 1/4	HM 3092	MS 3088-MS 3092		HMV 92E	TE 1/4BSP 01	HML 104T	HMV 104E	BH 100-0.7 / BH 160 / BH 160-4.8	23096K
AHX 3096 G	AOHX 3096 G	460	480	205	TR 500X5	30.80	9	G 1/4	HM 3092	MS 3088-MS 3092		HMV 92E	TE 1/4BSP 01	HM 30/500	HMV 100E	BH 100-0.7 / BH 160 / BH 160-4.8	23096K C3096K
AH 24096	AOH 24096	460	480	250	TR 500X5	33.60	9	G 1/4	HM 3192	MS 3188-MS 3192		HMV 92E	TE 1/4BSP 01	HM 31/500	HMV 100E	BH 100-0.7 / BH 160 / BH 160-4.8	24096K30
AHX 3196	AOHX 3196	460	480	295	TR 530X6	63.10	9	G 1/4	HM 3192	MS 3188-MS 3192		HMV 92E	TE 1/4BSP 01	HM 31/530	HMV 106E	BH 100-0.7 / BH 160 / BH 160-4.8	23196K
AHX 3196 G	AOHX 3196 G	460	480	295	TR 500X5	63.10	9	G 1/4	HM 3192	MS 3188-MS 3192		HMV 92E	TE 1/4BSP 01	HM 31/500	HMV 100E	BH 100-0.7 / BH 160 / BH 160-4.8	23196K C3196K
AH 24196	AOH 24196	460	480	340	TR 500X5	52.70	9	G 1/4	HM 3192	MS 3188-MS 3192		HMV 92E	TE 1/4BSP 01	HM 31/500	HMV 100E	BH 100-0.7 / BH 160 / BH 160-4.8	24196K30
AHX 3296	AOHX 3296	460	480	364	TR 530X6	82.10	9	G 1/4	HM 3192	MS 3188-MS 3192		HMV 92E	TE 1/4BSP 01	HM 31/530	HMV 106E	BH 100-0.7 / BH 160 / BH 160-4.8	23296K
AHX 3296 G	AOHX 3296 G	460	480	364	TR 500X5	82.10	9	G 1/4	HM 3192	MS 3188-MS 3192		HMV 92E	TE 1/4BSP 01	HM 31/500	HMV 100E	BH 100-0.7 / BH 160 / BH 160-4.8	23296K
AH 39/500	AOH 39/500	480	500	162	TR 520X6	28.00	9	G 1/8	HM 3096	MS 3096-MS30/500		HMV 96E	TE 1/8BSP 01	HML 104T	HMV 104E	BH 100-0.7 / BH 160 / BH 160-4.8	239/500K
AH 39/500 G	AOH 39/500 G	480	500	162	TR 530X6	29.80	9	G 1/4	HM 3096	MS 3096-MS30/500		HMV 96E	TE 1/4BSP 01	HM 30/530	HMV 106E	BH 100-0.7 / BH 160 / BH 160-4.8	239/500K
AHX 30/500	AOHX 30/500	480	500	209	TR 540X6	42.50	9	G 1/4	HM 3096	MS 3096-MS30/500		HMV 96E	TE 1/4BSP 01	HML 108T	HMV 108E	BH 100-0.7 / BH 160 / BH 160-4.8	230/500K
AHX 30/500 G	AOHX 30/500 G	480	500	209	TR 530X6	42.50	9	G 1/4	HM 3096	MS 3096-MS30/500		HMV 96E	TE 1/4BSP 01	HM 30/530	HMV 106E	BH 100-0.7 / BH 160 / BH 160-4.8	230/500K C30/500K
AH 240/500	AOH 240/500	480	500	253	TR 530X6	35.40	8.5	G 1/4	HM 3196	MS 3196		HMV 96E	TE 1/4BSP 01	HM 31/530	HMV 106E	BH 160 / BH 160-4.8	240/500K30
AHX 31/500	AOHX 31/500	480	500	313	TR 550X6	70.90	9	G 1/4	HM 3196	MS 3196		HMV 96E	TE 1/4BSP 01	HM 110T	HMV 110E	BH 100-0.7 / BH 160 / BH 160-4.8	231/500K
AHX 31/500 G	AOHX 31/500 G	480	500	313	TR 530X6	70.90	9	G 1/4	HM 3196	MS 3196		HMV 96E	TE 1/4BSP 01	HM 31/530	HMV 106E	BH 100-0.7 / BH 160 / BH 160-4.8	231/500K C31/500K
AH 241/500	AOH 241/500	480	500	360	TR 530X6	55.00	9	G 1/4	HM 3196	MS 3196		HMV 96E	TE 1/4BSP 01	HM 31/530	HMV 106E	BH 160 / BH 160-4.8	241/500K30 C41/500K30
AHX 32/500	AOHX 32/500	480	500	393	TR 560X6	94.60	9	G 1/4	HM 3196	MS 3196		HMV 96E	TE 1/4BSP 01	HM 31/560	HMV 112E	BH 100-0.7 / BH 160 / BH 160-4.8	232/500K
AHX 32/500 G	AOHX 32/500 G	480	500	393	TR 530X6	94.60	9	G 1/4	HM 3196	MS 3196		HMV 96E	TE 1/4BSP 01	HM 31/530	HMV 106E	BH 100-0.7 / BH 160 / BH 160-4.8	232/500K
AH 39/530	AOH 39/530	500	530	175	TR 550X6	43.40	12	G 1/4	HM 30/500	MS 3096-MS30/500		HMV 100E	TE 1/4BSP 01	HM 110T	HMV 110E	BH 100-0.7 / BH 160 / BH 160-4.8	239/530K
AH 39/530 G	AOH 39/530 G	500	530	175	TR 560X6	45.60	12	G 1/4	HM 30/500	MS 3096-MS30/500		HMV 100E	TE 1/4BSP 01	HM 30/560	HMV 112E	BH 100-0.7 / BH 160 / BH 160-4.8	239/530K
AH 30/530	AOH 30/530	500	530	230	TR 560X6	61.90	15	G 1/4	HM 30/500	MS 3096-MS30/500		HMV 100E	TE 1/4BSP 01	HM 30/560	HMV 112E	BH 100-0.7 / BH 160 / BH 160-4.8	230/530K C30/530K
AH 240/530	AOH 240/530	500	530	285	TR 550X6	66.90	12	G 1/4	HM 31/500	MS 31/500		HMV 100E	TE 1/4BSP 01	HM 110T	HMV 110E	BH 160 / BH 160-4.8	240/530K30
AH 240/530 G	AOH 240/530 G	500	530	285	TR 560X6	66.90	12	G 1/4	HM 31/500	MS 31/500		HMV 100E	TE 1/4BSP 01	HM 31/560	HMV 112E	BH 160 / BH 160-4.8	240/530K30
AH 31/530	AOH 31/530	500	530	325	TR 560X6	93.40	15	G 1/4	HM 31/500	MS 31/500		HMV 100E	TE 1/4BSP 01	HM 31/560	HMV 112E	BH 100-0.7 / BH 160 / BH 160-4.8	231/530K C31/530K
AH 241/530	AOH 241/530	500	530	370	TR 550X6	88.40	12	G 1/4	HM 31/500	MS 31/500		HMV 100E	TE 1/4BSP 01	HM 110T	HMV 110E	BH 160 / BH 160-4.8	241/530K30
AH 241/530 G	AOH 241/530 G	500	530	370	TR 560X6	88.40	12	G 1/4	HM 31/500	MS 31/500		HMV 100E	TE 1/4BSP 01	HM 31/560	HMV 112E	BH 160 / BH 160-4.8	241/530K30
AH 32/530	AOH 32/530	500	530	412	TR 580X6	133.00	15	G 1/4	HM 31/500	MS 31/500		HMV 100E	TE 1/4BSP 01	HM 116T	HMV 116E	BH 100-0.7 / BH 160 / BH 160-4.8	232/530K
AH 32/530 G	AOH 32/530 G	500	530	412	TR 560X6	133.00	15	G 1/4	HM 31/500	MS 31/500		HMV 100E	TE 1/4BSP 01	HM 31/560	HMV 112E	BH 100-0.7 / BH 160 / BH 160-4.8	232/530K



WITHDRAWAL SLEEVES
AH, AHX, AOH, AOHX



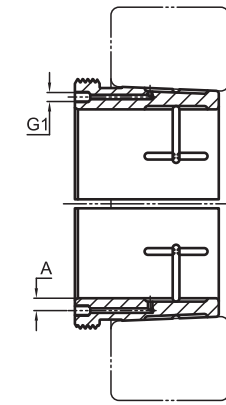
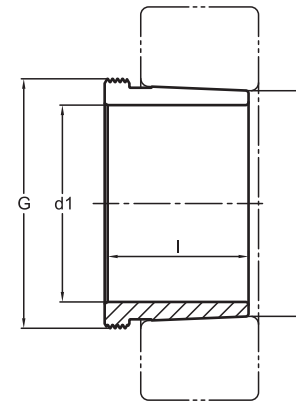
WITHDRAWAL SLEEVES AH, AHX

HYDRAULIC WITHDRAWAL SLEEVES
AOH, AOHX

Part Number	Hydraulic Part Number	d1 (mm)	d (mm)	l (mm)	G*	Weight (Kg)	HYDRAULIC		NUT + MOUNTING LOCK		ASSEMBLY TOOL		DISASSEMBLY TOOL			Hydraulic Pump	Bearings	
							A	G1	Assembly Nut	Lockwasher / Locking Devices	Hook Spanner	Assembly Hydraulic Nut	Extension Tube	Withdrawal Nut	Withdrawal Hook Spanner			Withdrawal Hydraulic Nut
AH 39/560	AOH 39/560	530	560	180	TR 580X6	47.40	12	G 1/4	HM 30/530	MS 30/530-600		HMV 106E	TE 1/4BSP 01	HM 116T		HMV 116E	BH 100-0.7 / BH 160 / BH 160-4.8	239/560K
AH 39/560 G	AOH 39/560 G	530	560	180	TR 600X6	52.30	12	G 1/4	HM 30/530	MS 30/530-600		HMV 106E	TE 1/4BSP 01	HM 30/600		HMV 120E	BH 100-0.7 / BH 160 / BH 160-4.8	239/560K
AH 30/560	AOH 30/560	530	560	240	TR 590X6	68.60	15	G 1/4	HM 30/530	MS 30/530-600		HMV 106E	TE 1/4BSP 01	HM 118T		HMV 106E	BH 100-0.7 / BH 160 / BH 160-4.8	230/560K
AHX 30/560	AOHX 30/560	530	560	240	TR 600X6	73.50	15	G 1/4	HM 30/530	MS 30/530-600		HMV 106E	TE 1/4BSP 01	HM 30/600		HMV 120E	BH 100-0.7 / BH 160 / BH 160-4.8	230/560K C30/560K
AH 240/560	AOH 240/560	530	560	296	TR 580X6	73.00	12	G 1/4	HM 31/530	MS 31/530		HMV 106E	TE 1/4BSP 01	HM 116T		HMV 116E	BH 160 / BH 160-4.8	240/560K30
AH 240/560 G	AOH 240/560 G	530	560	296	TR 600X6	73.00	12	G 1/4	HM 31/530	MS 31/530		HMV 106E	TE 1/4BSP 01	HM 31/600		HMV 120E	BH 160 / BH 160-4.8	240/560K30
AH 31/560	AOH 31/560	530	560	335	TR 600X6	102.00	15	G 1/4	HM 31/530	MS 31/530		HMV 106E	TE 1/4BSP 01	HM 31/600		HMV 120E	BH 100-0.7 / BH 160 / BH 160-4.8	231/560K C31/560K
AH 241/560	AOH 241/560	530	560	393	TR 580X6	92.00	12	G 1/4	HM 31/530	MS 31/530		HMV 106E	TE 1/4BSP 01	HM 116T		HMV 116E	BH 160 / BH 160-4.8	241/560K30
AH 241/560 G	AOH 241/560 G	530	560	393	TR 600X6	96.80	15	G 1/4	HM 31/530	MS 31/530		HMV 106E	TE 1/4BSP 01	HM 31/600		HMV 120E	BH 160 / BH 160-4.8	241/560K30 C41/560K30
AH 32/560	AOH 32/560	530	560	422	TR 610X6	145.00	15	G 1/4	HM 31/530	MS 31/530		HMV 106E	TE 1/4BSP 01	HM 122T			BH 100-0.7 / BH 160 / BH 160-4.8	232/560K
AHX 32/560	AOHX 32/560	530	560	422	TR 600X6	145.00	15	G 1/4	HM 31/530	MS 31/530		HMV 106E	TE 1/4BSP 01	HM 31/600		HMV 120E	BH 100-0.7 / BH 160 / BH 160-4.8	232/560K
AH 39/600	AOH 39/600	560	600	192	TR 625X6	61.60	15	G 1/4	HM 30/560	MS 30/560		HMV 112E	TE 1/4BSP 01	HMLL 125T		HMV 125E	BH 100-0.7 / BH 160 / BH 160-4.8	239/600K
AH 30/600	AOH 30/600	560	600	245	TR 630X6	75.40	15	G 1/4	HM 30/560	MS 30/560		HMV 112E	TE 1/4BSP 01	HM 30/630		HMV 126E	BH 100-0.7 / BH 160 / BH 160-4.8	230/600K
AH 240/600	AOH 240/600	560	600	310	TR 625X6	86.00	15	G 1/4	HM 31/560	MS 31/560-600		HMV 112E	TE 1/4BSP 01	HMLL 125T		HMV 125E	BH 160 / BH 160-4.8	240/600K30
AH 31/600	AOH 31/600	560	600	355	TR 630X6	118.00	15	G 1/4	HM 31/560	MS 31/560-600		HMV 112E	TE 1/4BSP 01	HM 31/630		HMV 126E	BH 100-0.7 / BH 160 / BH 160-4.8	231/600K
AH 241/600	AOH 241/600	560	600	413	TR 625X6	118.00	15	G 1/4	HM 31/560	MS 31/560		HMV 112E	TE 1/4BSP 01	HMLL 125T		HMV 125E	BH 160 / BH 160-4.8	241/600K30
AH 39/600 G	AOH 39/600 G	570	600	192	TR 630X6	57.00	15	G 1/4	HM 30/570	MS 30/530-600		HMV 114E	TE 1/4BSP 01	HM 30/630		HMV 126E	BH 100-0.7 / BH 160 / BH 160-4.8	239/600K
AHX 30/600	AOHX 30/600	570	600	245	TR 630X6	69.00	15	G 1/4	HM 30/570	MS 30/530-600		HMV 114E	TE 1/4BSP 01	HM 30/630		HMV 126E	BH 100-0.7 / BH 160 / BH 160-4.8	230/600K C30/600K
AHX 240/600	AOHX 240/600	570	600	310	TR 630X6	86.50	12	G 1/4	HM 31/570	MS 31/560-600		HMV 114E	TE 1/4BSP 01	HM 31/630		HMV 126E	BH 160 / BH 160-4.8	240/600K30
AHX 31/600	AOHX 31/600	570	600	355	TR 630X6	120.00	15	G 1/4	HM 31/570	MS 31/560-600		HMV 114E	TE 1/4BSP 01	HM 31/630		HMV 126E	BH 100-0.7 / BH 160 / BH 160-4.8	231/600K C31/600K
AHX 241/600	AOHX 241/600	570	600	413	TR 630X6	120.00	15	G 1/4	HM 31/570	MS 31/560-600		HMV 114E	TE 1/4BSP 01	HM 31/630		HMV 126E	BH 160 / BH 160-4.8	241/600K30 C41/600K30
AH 32/600	AOH 32/600	570	600	445	TR 650X6	167.00	15	G 1/4	HM 31/570	MS 31/560-600		HMV 114E	TE 1/4BSP 01	HM 130T		HMV 130E	BH 160 / BH 160-4.8	232/600K
AHX 32/600 G	AOHX 32/600 G	570	600	445	TR 630X6	159.00	15	G 1/4	HM 31/570	MS 31/560-600		HMV 114E	TE 1/4BSP 01	HM 31/630		HMV 126E	BH 100-0.7 / BH 160 / BH 160-4.8	232/600K
AH 39/630	AOH 39/630	600	630	210	TR 655X6	62.80	12	G 1/4	HM 30/600	MS 30/530-600		HMV 120E	TE 1/4BSP 01	HMLL 131T			BH 160 / BH 160-4.8	239/630K
AH 39/630 G	AOH 39/630 G	600	630	210	TR 670X6	69.40	15	G 1/4	HM 30/600	MS 30/530-600		HMV 120E	TE 1/4BSP 01	HM 30/670		HMV 134E	BH 100-0.7 / BH 160 / BH 160-4.8	239/630K
AH 30/630	AOH 30/630	600	630	258	TR 670X6	87.80	15	G 1/4	HM 30/600	MS 30/530-600		HMV 120E	TE 1/4BSP 01	HM 30/670		HMV 134E	BH 100-0.7 / BH 160 / BH 160-4.8	230/630K C30/630K
AH 240/630	AOH 240/630	600	630	330	TR 655X6	95.50	12	G 1/4	HM 31/600	MS 31/560-600		HMV 120E	TE 1/4BSP 01	HMLL 131T			BH 160 / BH 160-4.8	240/630K30
AH 240/630 G	AOH 240/630 G	600	630	330	TR 670X6	95.50	12	G 1/4	HM 31/600	MS 31/560-600		HMV 120E	TE 1/4BSP 01	HM 31/670		HMV 134E	BH 160 / BH 160-4.8	240/630K30
AH 31/630	AOH 31/630	600	630	375	TR 670X6	138.00	15	G 1/4	HM 31/600	MS 31/560-600		HMV 120E	TE 1/4BSP 01	HM 31/670		HMV 134E	BH 100-0.7 / BH 160 / BH 160-4.8	231/630K C31/630K
AH 241/630	AOH 241/630	600	630	440	TR 655X6	135.00	12	G 1/4	HM 31/600	MS 31/560-600		HMV 120E	TE 1/4BSP 01	HMLL 131T			BH 160 / BH 160-4.8	241/630K30
AH 241/630 G	AOH 241/630 G	600	630	440	TR 670X6	135.00	15	G 1/4	HM 31/600	MS 31/560-600		HMV 120E	TE 1/4BSP 01	HM 31/670		HMV 134E	BH 160 / BH 160-4.8	241/630K30
AH 32/630	AOH 32/630	600	630	475	TR 680X6	191.00	15	G 1/4	HM 31/600	MS 31/560-600		HMV 120E	TE 1/4BSP 01	HM 136T			BH 160 / BH 160-4.8	232/630K
AH 32/630 G	AOH 32/630 G	600	630	475	TR 670X6	191.00	15	G 1/4	HM 31/600	MS 31/560-600		HMV 120E	TE 1/4BSP 01	HM 31/670		HMV 134E	BH 100-0.7 / BH 160 / BH 160-4.8	232/630K
AH 39/670	AOH 39/670	630	670	216	TR 695X6	85.50	15	G 1/4	HM 30/630	MS 30/630		HMV 126E	TE 1/4BSP 01	HMLL 139T			BH 160 / BH 160-4.8	239/670K
AH 39/670 G	AOH 39/670 G	630	670	216	TR 710X7	92.90	15	G 1/4	HM 30/630	MS 30/630		HMV 126E	TE 1/4BSP 01	HM 30/710		HMV 142E	BH 160 / BH 160-4.8	239/670K
AH 30/670	AOH 30/670	630	670	280	TR 710X7	124.00	15	G 1/4	HM 30/630	MS 30/630		HMV 126E	TE 1/4BSP 01	HM 30/710		HMV 142E	BH 160 / BH 160-4.8	230/670K C30/670K



WITHDRAWAL SLEEVES
AH, AHX, AOH, AOHX



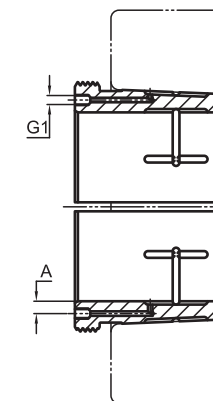
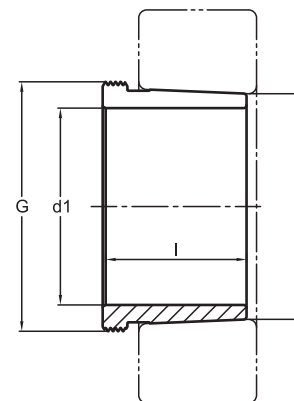
WITHDRAWAL SLEEVES AH, AHX

HYDRAULIC WITHDRAWAL SLEEVES
AOH, AOHX

Part Number	Hydraulic Part Number	d1 (mm)	d (mm)	l (mm)	G*	Weight (Kg)	HYDRAULIC		NUT + MOUNTING LOCK		ASSEMBLY TOOL		DISASSEMBLY TOOL			Hydraulic Pump	Bearings
							A	G1	Assembly Nut	Lockwasher / Locking Devices	Hook Spanner	Assembly Hydraulic Nut	Extension Tube	Withdrawal Nut	Withdrawal Hook Spanner		
AH 240/670	AOH 240/670	630	670	348	TR 695X6	136.00	15	G 1/4	HM 31/630	MS 31/630		HMV 126E	TE 1/4BSP 01	HMLL 139T		BH 160 / BH 160-4.8	240/670K30
AH 240/670 G	AOH 240/670 G	630	670	348	TR 710X7	136.00	15	G 1/4	HM 31/630	MS 31/630		HMV 126E	TE 1/4BSP 01	HM 31/710	HMV 142E	BH 160 / BH 160-4.8	240/670K30
AHX 31/670	AOHX 31/670	630	670	395	TR 710X7	189.00	15	G 1/4	HM 31/630	MS 31/630		HMV 126E	TE 1/4BSP 01	HM 31/710	HMV 142E	BH 160 / BH 160-4.8	231/670K C31/670K
AH 241/670	AOH 241/670	630	670	452	TR 710X7	183.00	15	G 1/4	HM 31/630	MS 31/630		HMV 126E	TE 1/4BSP 01	HM 31/710	HMV 142E	BH 160 / BH 160-4.8	241/670K30
AH 32/670	AOH 32/670	630	670	500	TR 720X7	256.00	15	G 1/4	HM 31/630	MS 31/630		HMV 126E	TE 1/4BSP 01	HM 144T		BH 160 / BH 160-4.8	232/670K
AH 32/670 G	AOH 32/670 G	630	670	500	TR 710X7	256.00	15	G 1/4	HM 31/630	MS 31/630		HMV 126E	TE 1/4BSP 01	HM 31/710	HMV 142E	BH 160 / BH 160-4.8	232/670K
AH 39/710	AOH 39/710	670	710	228	TR 740X7	102.00	15	G 1/4	HM 30/670	MS 30/670		HMV 134E	TE 1/4BSP 01	HMLL 148T		BH 160 / BH 160-4.8	239/710K
AH 39/710 G	AOH 39/710 G	670	710	228	TR 750X7	105.00	15	G 1/4	HM 30/670	MS 30/670		HMV 134E	TE 1/4BSP 01	HM 30/750	HMV 150E	BH 160 / BH 160-4.8	239/710K
AHX 30/710	AOHX 30/710	670	710	286	TR 750X7	138.00	15	G 1/4	HM 30/670	MS 30/670		HMV 134E	TE 1/4BSP 01	HM 30/750	HMV 150E	BH 160 / BH 160-4.8	230/710K C30/710K
AH 240/710	AOH 240/710	670	710	360	TR 740X7	150.00	15	G 1/4	HM 31/670	MS 31/670		HMV 134E	TE 1/4BSP 01	HMLL 148T		BH 160 / BH 160-4.8	240/710K30
AH 240/710 G	AOH 240/710 G	670	710	360	TR 750X7	150.00	15	G 1/4	HM 31/670	MS 31/670		HMV 134E	TE 1/4BSP 01	HM 31/750	HMV 150E	BH 160 / BH 160-4.8	240/710K30 C40/710K30
AHX 31/710	AOHX 31/710	670	710	405	TR 750X7	207.00	15	G 1/4	HM 31/670	MS 31/670		HMV 134E	TE 1/4BSP 01	HM 31/750	HMV 150E	BH 160 / BH 160-4.8	231/710K C31/710K
AH 241/710	AOH 241/710	670	710	483	TR 750X7	209.00	15	G 1/4	HM 31/670	MS 31/670		HMV 134E	TE 1/4BSP 01	HM 31/750	HMV 150E	BH 160 / BH 160-4.8	241/710K30
AH 32/710	AOH 32/710	670	710	515	TR 760X7	282.00	15	G 1/4	HM 31/670	MS 31/370		HMV 134E	TE 1/4BSP 01	HM 152T		BH 160 / BH 160-4.8	232/710K
AH 32/710 G	AOH 32/710 G	670	710	515	TR 750X7	282.00	15	G 1/4	HM 31/670	MS 31/670		HMV 134E	TE 1/4BSP 01	HM 31/750	HMV 150E	BH 160 / BH 160-4.8	232/710K
AH 39/750	AOH 39/750	710	750	234	TR 780X7	99.20	15	G 1/4	HM 30/710	MS 30/710		HMV 142E	TE 1/4BSP 01	HMLL 156T		BH 160 / BH 160-4.8	239/750K
AH 39/750 G	AOH 39/750 G	710	750	234	TR 800X7	118.00	15	G 1/4	HM 30/710	MS 30/710		HMV 142E	TE 1/4BSP 01	HM 30/800	HMV 160E	BH 160 / BH 160-4.8	239/750K
AH 30/750	AOH 30/750	710	750	300	TR 800X7	181.00	15	G 1/4	HM 30/710	MS 30/710		HMV 142E	TE 1/4BSP 01	HM 30/800	HMV 160E	BH 160 / BH 160-4.8	230/750K C30/750K
AH 240/750	AOH 240/750	710	750	380	TR 780X7	170.00	15	G 1/4	HM 31/710	MS 31/710		HMV 142E	TE 1/4BSP 01	HMLL 156T		BH 160-4.8	240/750K30
AH 240/750 G	AOH 240/750 G	710	750	380	TR 800X7	170.00	15	G 1/4	HM 31/710	MS 31/710		HMV 142E	TE 1/4BSP 01	HM 31/800	HMV 160E	BH 160-4.8	240/750K30
AH 31/750	AOH 31/750	710	750	425	TR 800X7	236.00	15	G 1/4	HM 31/710	MS 31/710		HMV 142E	TE 1/4BSP 01	HM 31/800	HMV 160E	BH 160 / BH 160-4.8	231/750K C31/750K
AH 241/750	AOH 241/750	710	750	520	TR 780X7	240.00	15	G 1/4	HM 31/710	MS 31/710		HMV 142E	TE 1/4BSP 01	HMLL 156T		BH 160-4.8	241/750K30
AH 241/750 G	AOH 241/750 G	710	750	520	TR 800X7	240.00	15	G 1/4	HM 31/710	MS 31/710		HMV 142E	TE 1/4BSP 01	HM 31/800	HMV 160E	BH 160-4.8	241/750K30
AH 32/750	AOH 32/750	710	750	540	TR 800X7	362.00	15	G 1/4	HM 31/710	MS 31/710		HMV 142E	TE 1/4BSP 01	HM 31/800	HMV 160E	BH 160 / BH 160-4.8	232/750K
AH 39/800	AOH 39/800	750	800	245	TR 830X7	99.20	15	G 1/4	HM 30/750	MS 30/750-800		HMV 150E	TE 1/4BSP 01	HMLL 166T		BH 160 / BH 160-4.8	239/800K
AH 39/800 G	AOH 39/800 G	750	800	245	TR 850X7	155.00	15	G 1/4	HM 30/750	MS 30/750-800		HMV 150E	TE 1/4BSP 01	HM 30/850	HMV 170E	BH 160 / BH 160-4.8	239/800K
AH 30/800	AOH 30/800	750	800	308	TR 850X7	200.00	15	G 1/4	HM 30/750	MS 30/750-800		HMV 150E	TE 1/4BSP 01	HM 30/850	HMV 170E	BH 160 / BH 160-4.8	230/800K C30/800K
AH 240/800	AOH 240/800	750	800	395	TR 830X7	234.00	15	G 1/4	HM 31/750	MS 31/750-800		HMV 150E	TE 1/4BSP 01	HMLL 166T		BH 160-4.8	240/800K30
AH 240/800 G	AOH 240/800 G	750	800	395	TR 850X7	234.00	15	G 1/4	HM 31/750	MS 31/750-800		HMV 150E	TE 1/4BSP 01	HM 31/850	HMV 170E	BH 160-4.8	240/800K30
AH 31/800	AOH 31/800	750	800	438	TR 850X7	304.00	15	G 1/4	HM 31/750	MS 31/750-800		HMV 150E	TE 1/4BSP 01	HM 31/850	HMV 170E	BH 160 / BH 160-4.8	231/800K C31/800K
AH 241/800	AOH 241/800	750	800	525	TR 830X7	306.00	15	G 1/4	HM 31/750	MS 31/750-800		HMV 150E	TE 1/4BSP 01	HMLL 166T		BH 160-4.8	241/800K30
AH 241/800 G	AOH 241/800 G	750	800	525	TR 850X7	306.00	15	G 1/4	HM 31/750	MS 31/750-800		HMV 150E	TE 1/4BSP 01	HM 31/850	HMV 170E	BH 160-4.8	241/800K30
AH 32/800	AOH 32/800	750	800	550	TR 850X7	403.00	15	G 1/4	HM 31/750	MS 31/750-800		HMV 150E	TE 1/4BSP 01	HM 31/850	HMV 170E	BH 160 / BH 160-4.8	232/800K
AH 39/850	AOH 39/850	800	850	258	TR 880X7	166.00	15	G 1/4	HM 30/800	MS 30/750-800		HMV 160E	TE 1/4BSP 01	HMLL 176T		BH 160 / BH 160-4.8	239/850K
AH 39/850 G	AOH 39/850 G	800	850	258	TR 900X7	176.00	15	G 1/4	HM 30/800	MS 30/750-800		HMV 160E	TE 1/4BSP 01	HM 30/900	HMV 180E	BH 160 / BH 160-4.8	239/850K
AH 30/850	AOH 30/850	800	850	325	TR 900X7	226.00	15	G 1/4	HM 30/800	MS 30/750-800		HMV 160E	TE 1/4BSP 01	HM 30/900	HMV 180E	BH 160 / BH 160-4.8	230/850K C30/850K



WITHDRAWAL SLEEVES
AH, AHX, AOH, AOHX



WITHDRAWAL SLEEVES AH, AHX

HYDRAULIC WITHDRAWAL SLEEVES AOH, AOHX

Part Number	Hydraulic Part Number	d1 (mm)	d (mm)	l (mm)	G*	Weight (Kg)	HYDRAULIC		NUT + MOUNTING LOCK		ASSEMBLY TOOL		DISASSEMBLY TOOL			Hydraulic Pump	Bearings
							A	G1	Assembly Nut	Lockwasher / Locking Devices	Hook Spanner	Assembly Hydraulic Nut	Extension Tube	Withdrawal Nut	Withdrawal Hook Spanner		
AH 240/850	AOH 240/850	800	850	415	TR 880X7	252.00	15	G 1/4	HM 31/800	MS 31/750-800		HMV 160E	TE 1/4BSP 01	HMLL 176T		BH 160-4.8	240/850K30
AH 240/850 G	AOH 240/850 G	800	850	415	TR 900X7	252.00	15	G 1/4	HM 31/800	MS 31/750-800		HMV 160E	TE 1/4BSP 01	HM 31/900		BH 160-4.8	240/850K30
AH 31/850	AOH 31/850	800	850	462	TR 900X7	342.00	15	G 1/4	HM 31/800	MS 31/750-800		HMV 160E	TE 1/4BSP 01	HM 31/900		BH 160 / BH 160-4.8	231/850K C31/850K
AH 241/850	AOH 241/850	800	850	560	TR 900X7	344.00	15	G 1/4	HM 31/800	MS 31/750-800		HMV 160E	TE 1/4BSP 01	HM 31/900		BH 160-4.8	241/850K30
AH 32/850	AOH 32/850	800	850	585	TR 900X7	458.00	15	G 1/4	HM 31/800	MS 31/750-800		HMV 160E	TE 1/4BSP 01	HM 31/900		BH 160 / BH 160-4.8	232/850K
AH 39/900	AOH 39/900	850	900	265	TR 930X8	182.00	15	G 1/4	HM 30/850	MS 30/850-900		HMV 170E	TE 1/4BSP 01	HMLL 186T		BH 160 / BH 160-4.8	239/900K
AH 39/900 G	AOH 39/900 G	850	900	265	TR 950X8	192.00	15	G 1/4	HM 30/850	MS 30/850-900		HMV 170E	TE 1/4BSP 01	HM 30/950		BH 160 / BH 160-4.8	239/900K
AH 30/900	AOH 30/900	850	900	335	TR 950X8	248.00	15	G 1/4	HM 30/850	MS 30/850-900		HMV 170E	TE 1/4BSP 01	HM 30/950		BH 160 / BH 160-4.8	230/900K C30/900K
AH 240/900	AOH 240/900	850	900	430	TR 950X8	276.00	15	G 1/4	HM 31/850	MS 31/850		HMV 170E	TE 1/4BSP 01	HM 31/950		BH 160-4.8	240/900K30
AH 31/900	AOH 31/900	850	900	475	TR 950X8	375.00	15	G 1/4	HM 31/850	MS 31/850		HMV 170E	TE 1/4BSP 01	HM 31/950		BH 160 / BH 160-4.8	231/900K
AH 241/900	AOH 241/900	850	900	575	TR 950X8	402.00	15	G 1/4	HM 31/850	MS 31/850		HMV 170E	TE 1/4BSP 01	HM 31/950		BH 160-4.8	241/900K30
AH 32/900	AOH 32/900	850	900	585	TR 950X8	485.00	15	G 1/4	HM 31/850	MS 31/850		HMV 170E	TE 1/4BSP 01	HM 31/950		BH 160 / BH 160-4.8	232/900K
AH 39/950	AOH 39/950	900	950	282	TR 980X8	206.00	15	G 1/4	HM 30/900	MS 30/850-900		HMV 180E	TE 1/4BSP 01	HMLL 196T		BH 160 / BH 160-4.8	239/950K
AH 39/950 G	AOH 39/950 G	900	950	282	TR 1000X8	216.00	15	G 1/4	HM 30/900	MS 30/850-900		HMV 180E	TE 1/4BSP 01	HM 30/1000		BH 160 / BH 160-4.8	239/950K
AH 30/950	AOH 30/950	900	950	355	TR 1000X8	279.00	15	G 1/4	HM 30/900	MS 30/850-900		HMV 180E	TE 1/4BSP 01	HM 30/1000		BH 160 / BH 160-4.8	230/950K C30/950K
AH 240/950	AOH 240/950	900	950	467	TR 1000X8	318.00	15	G 1/4	HM 31/900	MS 31/900		HMV 180E	TE 1/4BSP 01	HM 31/1000		BH 160-4.8	240/950K30
AH 31/950	AOH 31/950	900	950	500	TR 1000X8	422.00	15	G 1/4	HM 31/900	MS 31/900		HMV 180E	TE 1/4BSP 01	HM 31/1000		BH 160 / BH 160-4.8	231/950K
AH 32/950	AOH 32/950	900	950	600	TR 1000X8	527.00	15	G 1/4	HM 31/900	MS 31/900		HMV 180E	TE 1/4BSP 01	HM 31/1000		BH 160 / BH 160-4.8	232/950K
AH 241/950	AOH 241/950	900	950	605	TR 1000X8	423.00	15	G 1/4	HM 31/900	MS 31/900		HMV 180E	TE 1/4BSP 01	HM 31/1000		BH 160-4.8	241/950K30
AH 39/1000	AOH 39/1000	950	1000	296	TR 1035X8	207.20	15	G 1/4	HM 30/950	MS 30/950		HMV 190E	TE 1/4BSP 01	HMLL 207T		BH 160-4.8	239/1000K
AH 39/1000 G	AOH 39/1000 G	950	1000	296	TR 1060X8	246.00	15	G 1/4	HM 30/950	MS 30/950		HMV 190E	TE 1/4BSP 01	HM 30/1060		BH 160 / BH 160-4.8	239/1000K
AH 30/1000	AOH 30/1000	950	1000	365	TR 1060X8	283.00	15	G 1/4	HM 30/950	MS 30/950		HMV 190E	TE 1/4BSP 01	HM 30/1060		BH 160 / BH 160-4.8	230/1000K C30/1000K
AH 240/1000	AOH 240/1000	950	1000	469	TR 1060X8	353.00	15	G 1/4	HM 31/950	MS 31/950		HMV 190E	TE 1/4BSP 01	HM 31/1060		BH 160-4.8	240/1000K30
AH 31/1000	AOH 31/1000	950	1000	525	TR 1060X8	482.00	15	G 1/4	HM 31/950	MS 31/950		HMV 190E	TE 1/4BSP 01	HM 31/1060		BH 160 / BH 160-4.8	231/1000K C31/1000K
AH 32/1000	AOH 32/1000	950	1000	630	TR 1060X8	603.00	15	G 1/4	HM 31/950	MS 31/950		HMV 190E	TE 1/4BSP 01	HM 31/1060		BH 160 / BH 160-4.8	232/1000K
AH 241/1000	AOH 241/1000	950	1000	645	TR 1060X8	482.00	15	G 1/4	HM 31/950	MS 31/950		HMV 190E	TE 1/4BSP 01	HM 31/1060		BH 160-4.8	241/1000K30
AH 39/1060	AOH 39/1060	1000	1060	310	TR 1095X8	312.00	15	G 1/4	HM 30/1000	MS 30/1000		HMV 200E	TE 1/4BSP 01	HMLL 219T		BH 160-4.8	239/1060K
AH 39/1060 G	AOH 39/1060 G	1000	1060	310	TR 1120X8	312.00	15	G 1/4	HM 30/1000	MS 30/1000		HMV 200E	TE 1/4BSP 01	HM 30/1120		BH 160-4.8	239/1060K
AH 30/1060	AOH 30/1060	1000	1060	385	TR 1120X8	400.00	15	G 1/4	HM 30/1000	MS 30/1000		HMV 200E	TE 1/4BSP 01	HM 30/1120		BH 160-4.8	230/1060K
AH 240/1060	AOH 240/1060	1000	1060	498	TR 1120X8	440.00	15	G 1/4	HM 31/1000	MS 31/1000		HMV 200E	TE 1/4BSP 01	HM 31/1120		BH 160-4.8	240/1060K30
AH 31/1060	AOH 31/1060	1000	1060	540	TR 1120X8	595.00	15	G 1/4	HM 31/1000	MS 31/1000		HMV 200E	TE 1/4BSP 01	HM 31/1120		BH 160-4.8	231/1060K
AH 241/1060	AOH 241/1060	1000	1060	665	TR 1120X8	605.00	15	G 1/4	HM 31/1000	MS 31/1000		HMV 200E	TE 1/4BSP 01	HM 31/1120		BH 160-4.8	241/1060K30